



East Sussex

TB Strategy Monitoring Indicators

The TB Strategy Monitoring Indicators tool has been developed by Public Health England to allow local information about the key TB monitoring indicators for the Collaborative TB Strategy 2015-2020 to be easily accessed. The indicators will enable users to see how their areas are performing against other localities, and to track their performance over time. The interactive maps, graphs and tables can be used to support local areas in assessing their local TB service needs, developing their local TB action plans and monitoring their progress in achieving the ambitions of their local plans and the Strategy.

For local authorities and CCGs with fewer than 20 TB cases per year, data for all the indicators, apart from TB incidence, will be suppressed to avoid deductive disclosure.

The Collaborative Tuberculosis Strategy for England 2015-2020 can be accessed via the link:
<https://www.gov.uk/government/publications/collaborative-tuberculosis-strategy-for-england>

Full detail of the metadata can be found in the online version of the tool <http://fingertips.phe.org.uk/profile/tb-monitoring>

Contents

| | |
|--------------------|--------|
| Trends | |
| Key Indicators | Page 2 |
| Tartan Rugs | |
| Key Indicators | Page 3 |
| Bar Charts | |
| Key Indicators | Page 4 |
| Definitions | |
| | Page 5 |



© Crown Copyright and database rights 2017, Ordnance Survey 100016969

<http://fingertips.phe.org.uk/profile/tb-monitoring>

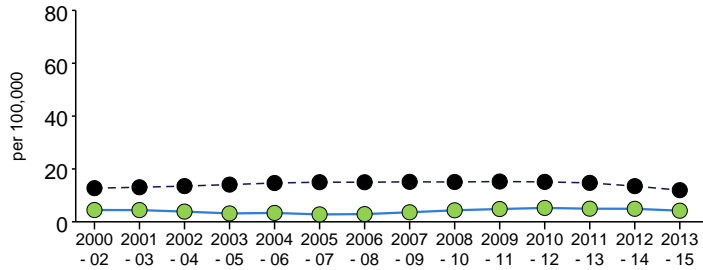
Produced by Public Health England.

For enquiries please contact profilefeedback@phe.gov.uk

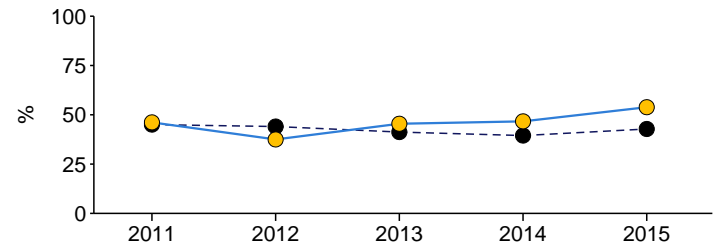
Trends

Key Indicators

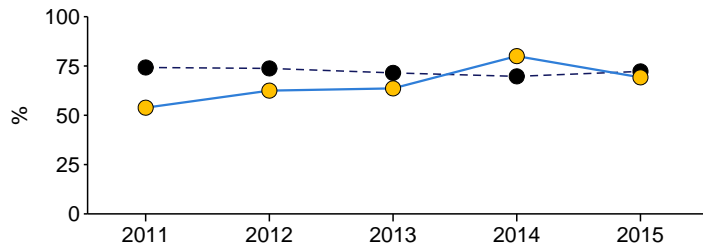
TB incidence (three year average)



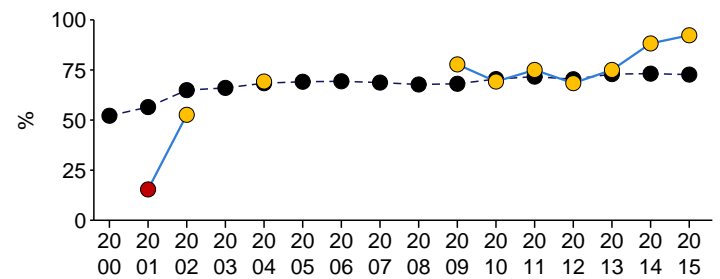
Proportion of pulmonary TB cases starting treatment within two months of symptom onset



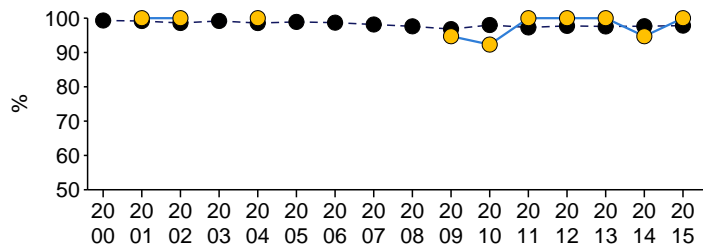
Proportion of pulmonary TB cases starting treatment within four months of symptom onset



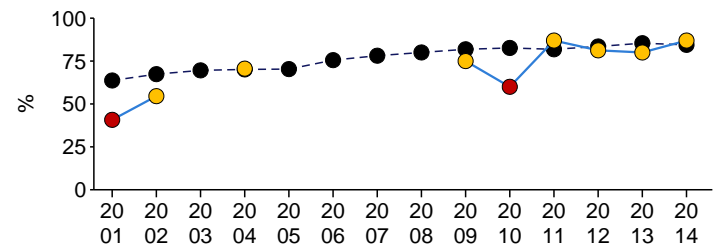
Proportion of pulmonary TB cases that were culture confirmed



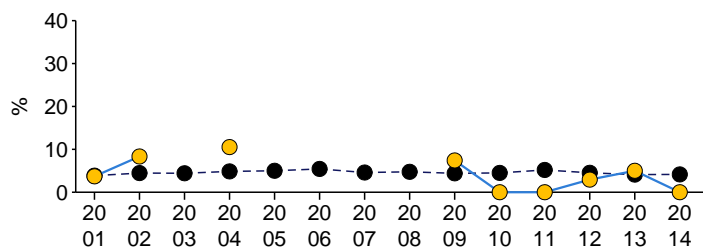
Proportion of culture confirmed TB cases with drug susceptibility testing reported for the four first line agents



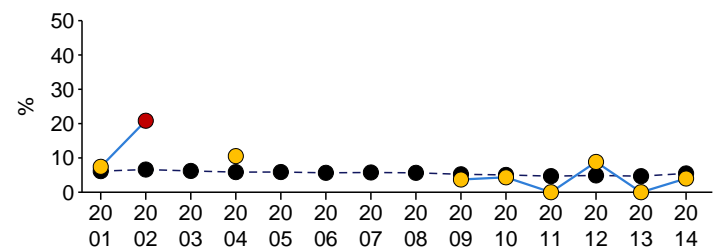
Proportion of drug sensitive TB cases who had completed a full course of treatment by 12 months



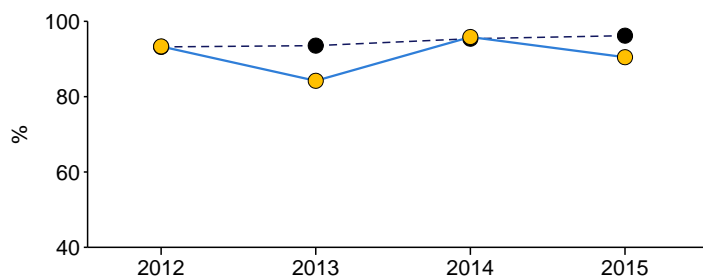
Proportion of drug sensitive TB cases who were lost to follow up at last reported outcome



Proportion of drug sensitive TB cases who had died at last reported outcome



Proportion of TB cases offered an HIV test



Key

---●--- England

Values for East Sussex in comparison to England value:

—●— Significantly better

—●— Not significantly different

—●— Significantly worse

Where East Sussex value is not shown data is suppressed

Tartan Rugs

Key Indicators

| | Period | England | Bracknell F | Brig & Hov | Bucks | East Sussex | Hants | IoW | Kent | Medway | Milt Keynes | Oxon | Portsmouth | Reading | Slough | Southampton | Surrey | W Berks | W Sussex | Win & Maid | Wokingham |
|---|-----------|---------|-------------|------------|-------|-------------|-------|-----|------|--------|-------------|------|------------|---------|--------|-------------|--------|---------|----------|------------|-----------|
| TB incidence (three year average) | 2013 - 15 | 12.0 | 7.6 | 7.3 | 8.2 | 4.2 | 3.8 | 1.2 | 6.6 | 5.6 | 10.2 | 9.4 | 7.5 | 34.7 | 47.8 | 12.5 | 5.8 | 5.1 | 5.8 | 8.4 | 10.3 |
| Proportion of pulmonary TB cases starting treatment within two months of symptom onset | 2015 | 42.8 | - | 23.5 | 13.6 | 53.8 | 33.3 | - | 35.2 | - | 66.7 | 29.2 | - | 53.8 | 40.0 | 46.2 | 40.0 | - | 28.6 | - | - |
| Proportion of pulmonary TB cases starting treatment within four months of symptom onset | 2015 | 72.2 | - | 52.9 | 36.4 | 69.2 | 58.3 | - | 55.6 | - | 88.9 | 70.8 | - | 69.2 | 70.0 | 84.6 | 70.0 | - | 42.9 | - | - |
| Proportion of pulmonary TB cases that were culture confirmed | 2015 | 72.7 | - | 94.1 | 60.9 | 92.3 | 77.8 | - | 76.3 | - | 72.7 | 76.9 | - | 64.3 | 80.0 | 71.4 | 68.6 | - | 69.2 | - | - |
| Proportion of culture confirmed TB cases with drug susceptibility testing reported for the four first line agents | 2015 | 97.8 | - | 94.4 | 100 | 100 | 100 | - | 100 | - | 100 | 96.9 | - | 95.0 | 100 | 100 | 100 | - | 100 | - | - |
| Proportion of drug sensitive TB cases who had completed a full course of treatment by 12 months | 2014 | 84.4 | - | 76.5 | 75.0 | 87.0 | 83.7 | - | 82.2 | - | 77.8 | 89.9 | - | 93.5 | 94.1 | 80.0 | 85.5 | - | 81.1 | 94.1 | - |
| Proportion of drug sensitive TB cases who were lost to follow up at last reported outcome | 2014 | 4.2 | - | 0.0 | 2.6 | 0.0 | 2.3 | - | 5.9 | - | 0.0 | 1.4 | - | 3.1 | 3.4 | 6.9 | 3.9 | - | 7.3 | 0.0 | - |
| Proportion of drug sensitive TB cases who had died at last reported outcome | 2014 | 5.5 | - | 13.6 | 7.9 | 4.0 | 6.8 | - | 6.9 | - | 8.7 | 5.5 | - | 1.6 | 1.7 | 3.4 | 5.3 | - | 4.9 | 9.5 | - |
| Proportion of TB cases offered an HIV test | 2015 | 96.2 | - | 100 | 97.6 | 90.5 | 89.6 | - | 98.7 | - | 90.5 | 95.7 | - | 100 | 98.5 | 95.2 | 94.8 | - | 92.1 | - | - |

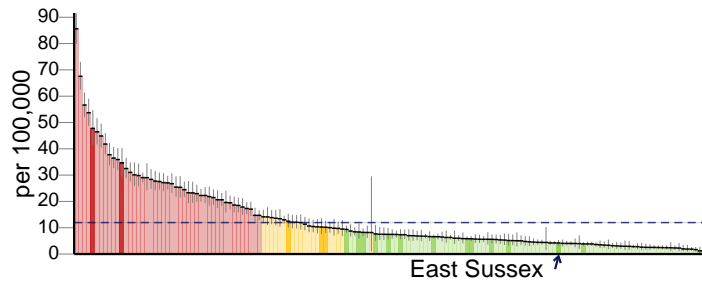
Comparison to England value

Better
Similar
Worse
No data / suppressed

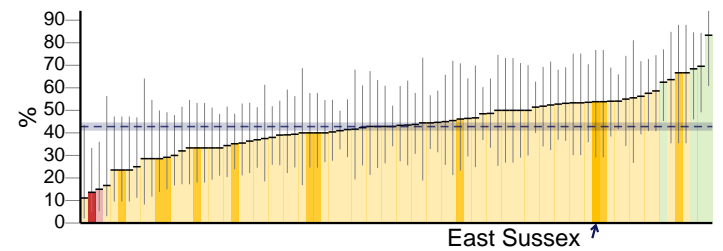
Bar Charts

Key Indicators

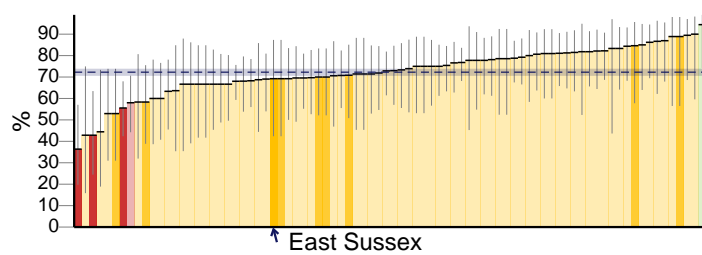
TB incidence (three year average)



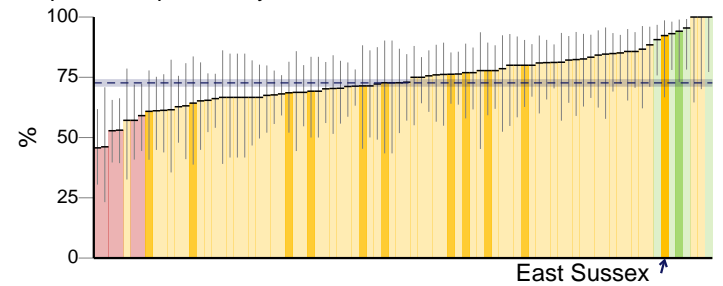
Proportion of pulmonary TB cases starting treatment within two months of symptom onset



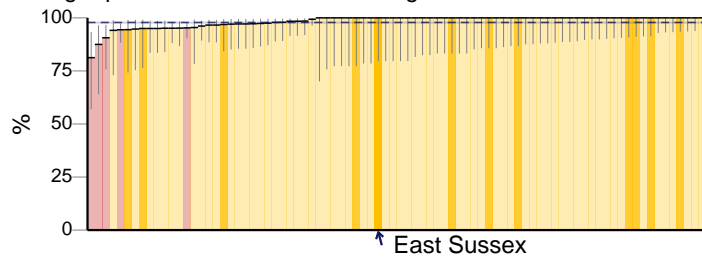
Proportion of pulmonary TB cases starting treatment within four months of symptom onset



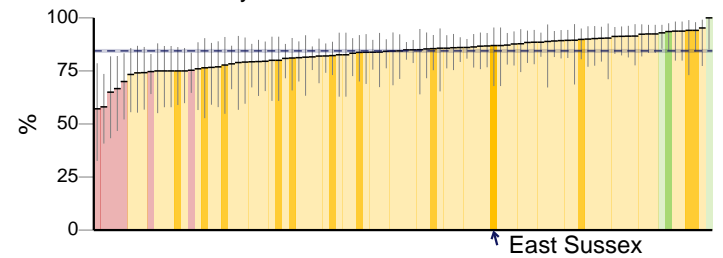
Proportion of pulmonary TB cases that were culture confirmed



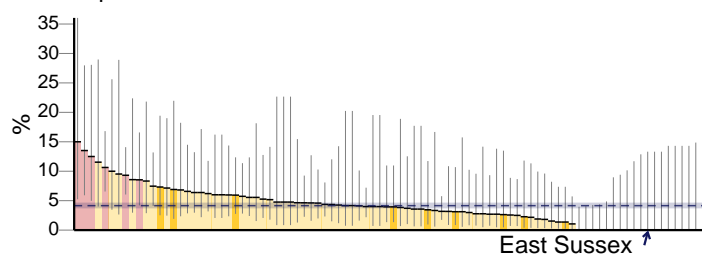
Proportion of culture confirmed TB cases with drug susceptibility testing reported for the four first line agents



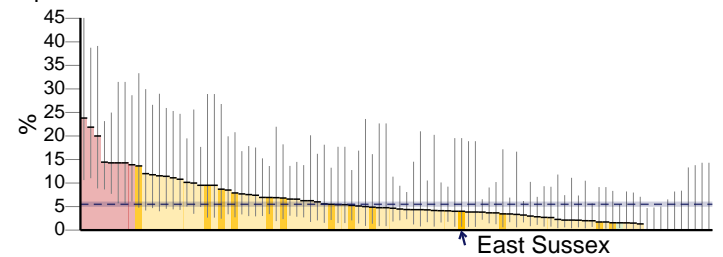
Proportion of drug sensitive TB cases who had completed a full course of treatment by 12 months



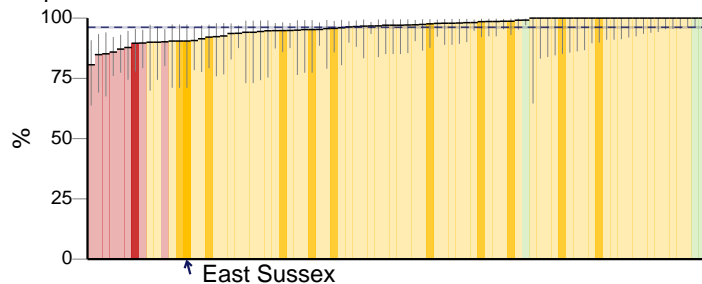
Proportion of drug sensitive TB cases who were lost to follow up at last reported outcome



Proportion of drug sensitive TB cases who had died at last reported outcome



Proportion of TB cases offered an HIV test



Key

In comparison to England value

South East LAs: ■ Better ■ Similar ■ Worse

Other LAs: ■ Better ■ Similar ■ Worse

England value and confidence interval

Definitions

Key Indicators

TB incidence (three year average)

Three year average incidence of TB per 100,000 population

Proportion of pulmonary TB cases starting treatment within two months of symptom onset

The annual proportion of pulmonary TB cases known to have started treatment within two months of symptom onset (exclusions: TB cases with no date of symptom onset or date of treatment start and TB cases diagnosed post-mortem).

Proportion of pulmonary TB cases starting treatment within four months of symptom onset

The annual proportion of pulmonary TB cases known to have started treatment within four months of symptom onset (exclusions: TB cases with no date of symptom onset or date of treatment start and TB cases diagnosed post-mortem).

Proportion of pulmonary TB cases that were culture confirmed

The annual proportion of pulmonary TB cases with a specimen taken for culture that was positive for *M. tuberculosis* complex (MTBC) within one year of notification.

Proportion of culture confirmed TB cases with drug susceptibility testing reported for the four first line agents

The annual proportion of TB cases which were culture confirmed and had known drug susceptibility results for the four first line agents: isoniazid rifampicin pyrazinamide and ethambutol

Proportion of drug sensitive TB cases who had completed a full course of treatment by 12 months

The annual proportion of drug sensitive TB cases expected to complete treatment within 12 months who had completed treatment within 12 months of treatment start date (exclusions: TB cases with rifampicin resistance or MDR-TB and TB cases with CNS, spinal, miliary or disseminated TB).

Proportion of drug sensitive TB cases who were lost to follow up at last reported outcome

The annual proportion of drug sensitive TB cases who were lost to follow up at the last reported outcome (exclusions: TB cases with rifampicin resistance or MDR-TB).

Proportion of drug sensitive TB cases who had died at last reported outcome

The annual proportion of drug sensitive TB cases who had died by the last reported outcome (exclusions: TB cases with rifampicin resistance or MDR-TB).

Proportion of TB cases offered an HIV test

The annual proportion of TB cases who were offered an HIV test (exclusions: TB Cases where HIV status was already known and TB cases diagnosed post mortem).