



# Hastings

District

This profile was published on 3 July 2018

## Local Authority Health Profile 2018

This profile gives a picture of people's health in Hastings. It is designed to help local government and health services understand their community's needs, so that they can work together to improve people's health and reduce health inequalities.

### Health in summary

The health of people in Hastings is generally worse than the England average. Hastings is one of the 20% most deprived districts/unitary authorities in England and about 25% (4,300) of children live in low income families. Life expectancy for both men and women is lower than the England average.

### Health inequalities

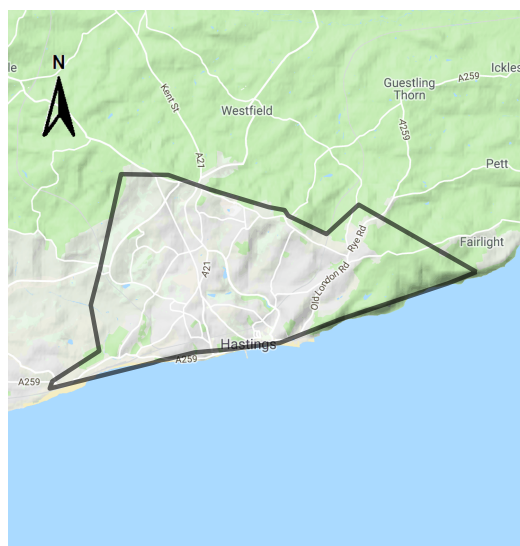
Life expectancy is 10.2 years lower for men and 6.4 years lower for women in the most deprived areas of Hastings than in the least deprived areas.\*\*

### Child health

In Year 6, 20.7% (196) of children are classified as obese. The rate of alcohol-specific hospital stays among those under 18 is 97\*, worse than the average for England. This represents 19 stays per year. Levels of GCSE attainment and smoking at time of delivery are worse than the England average.

### Adult health

The rate of alcohol-related harm hospital stays is 709\*, worse than the average for England. This represents 643 stays per year. The rate of self-harm hospital stays is 282\*, worse than the average for England. This represents 252 stays per year. The rate of people killed and seriously injured on roads is worse than average.



0km 2km 4km

Contains National Statistics data © Crown copyright and database right 2018  
Contains OS data © Crown copyright and database right 2018  
Map data © 2018 Google  
Local authority displayed with ultra-generalised clipped boundary

For more information on priorities in this area, see:

- [www.eastsussexjsna.org.uk](http://www.eastsussexjsna.org.uk)
- [www.essp.org.uk](http://www.essp.org.uk)

Visit [www.healthprofiles.info](http://www.healthprofiles.info) for more area profiles, more information and interactive maps and tools.

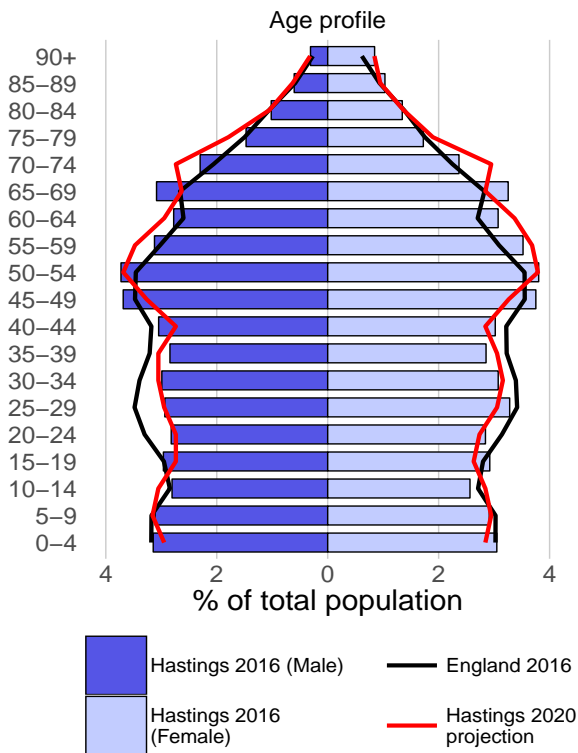
Local Authority Health Profiles are Official Statistics and are produced based on the three pillars of the [Code of Practice for Statistics](#): Trustworthiness, Quality and Value.

Follow [@PHE\\_uk](https://twitter.com/PHE_uk) on Twitter

\* rate per 100,000 population

\*\* see [page 3](#)

# Population



Understanding the sociodemographic profile of an area is important when planning services. Different population groups may have different health and social care needs and are likely to interact with services in different ways.

	Hastings (persons)	England (persons)
Population (2016)*	93	55,268
Projected population (2020)*	95	56,705
% population aged under 18	20.9%	21.3%
% population aged 65+	19.2%	17.9%
% people from an ethnic minority group	3.3%	13.6%

\* thousands

Source:  
Populations: Office for National Statistics licensed under the Open Government Licence  
Ethnic minority groups: Annual Population Survey, October 2015 to September 2016

# Deprivation

The level of deprivation in an area can be used to identify those communities who may be in the greatest need of services. These maps and charts show the Index of Multiple Deprivation 2015 (IMD 2015).

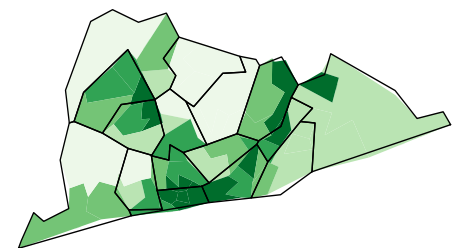
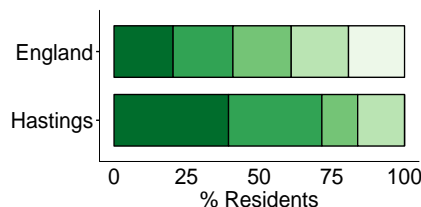
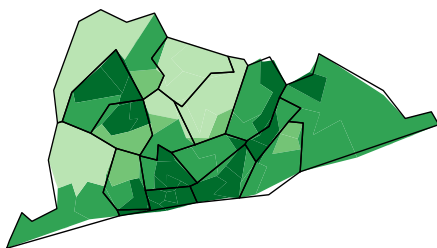
## National

The first of the two maps shows differences in deprivation in this area based on national comparisons, using national quintiles (fifths) of IMD 2015, shown by lower super output area. The darkest coloured areas are some of the most deprived neighbourhoods in England.

The chart shows the percentage of the population who live in areas at each level of deprivation.

## Local

The second map shows the differences in deprivation based on local quintiles (fifths) of IMD 2015 for this area.



Lines represent electoral wards (2017). Quintiles shown for 2011 based lower super output areas (LSOAs). Contains OS data © Crown copyright and database rights 2018. Contains public sector information licensed under the Open Government Licence v3.0

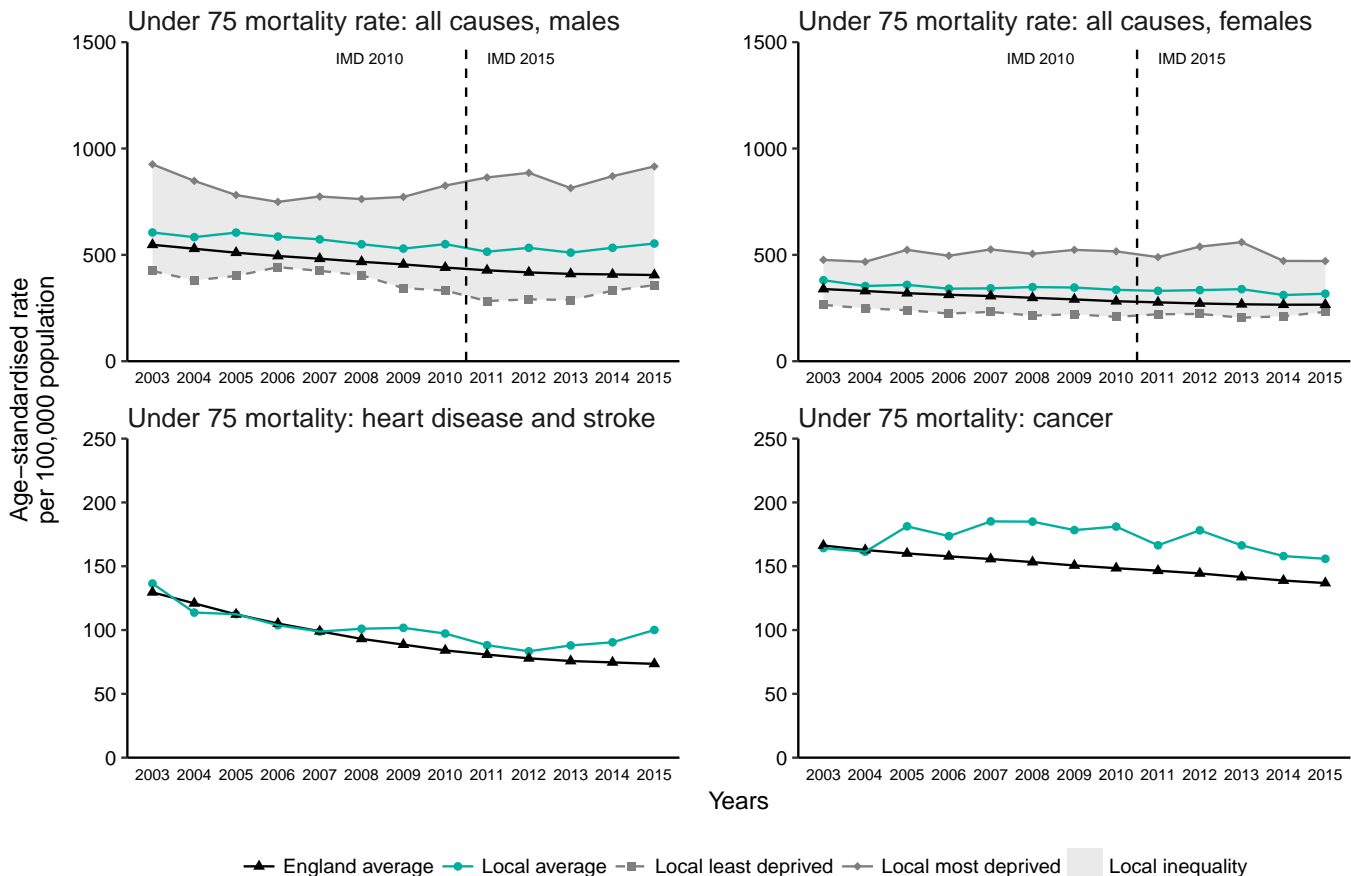
# Health inequalities: life expectancy

The charts show life expectancy for males and females within this local authority for 2014-16. The local authority is divided into local deciles (tenths) by deprivation (IMD 2015). The life expectancy gap is the difference between the top and bottom of the inequality slope. This represents the range in years of life expectancy from most to least deprived within this area. If there was no inequality in life expectancy the line would be horizontal.



# Trends over time: under 75 mortality

These charts provide a comparison of the trends in death rates in people under 75 between this area and England. For deaths from all causes, they also show the trends in the most deprived and least deprived local quintiles (fifths) of this area.



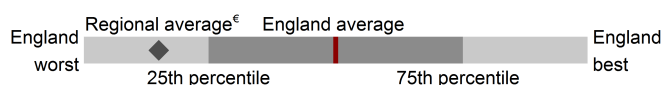
Data from 2010-12 onwards have been revised to use IMD 2015 to define local deprivation quintiles (fifths), all prior time points use IMD 2010. In doing this, areas are grouped into deprivation quintiles using the Index of Multiple Deprivation which most closely aligns with the time period of the data. This provides a more accurate way of examining changes over time by deprivation.

Data points are the midpoints of three year averages of annual rates, for example 2005 represents the period 2004 to 2006. Where data are missing for local least or most deprived, the value could not be calculated as the number of cases is too small.

# Health summary for Hastings

The chart below shows how the health of people in this area compares with the rest of England. This area's value for each indicator is shown as a circle. The England average is shown by the red line, which is always at the centre of the chart. The range of results for all local areas in England is shown as a grey bar. A red circle means that this area is significantly worse than England for that indicator. However, a green circle may still indicate an important public health problem.

- Significantly worse than England average
- Not significantly different from England average
- Significantly better than England average
- Not compared



	Indicator names	Period	Local count	Local value	Eng value	Eng worst		Eng best
Life expectancy and causes of death	1 Life expectancy at birth (Male)	2014 – 16	n/a	76.8	79.5	74.2	●	83.7
	2 Life expectancy at birth (Female)	2014 – 16	n/a	82.0	83.1	79.4	●	86.8
	3 Under 75 mortality rate: all causes	2014 – 16	1,072	432.7	333.8	545.7	●	215.2
	4 Under 75 mortality rate: cardiovascular	2014 – 16	246	100.0	73.5	141.3	●	42.3
	5 Under 75 mortality rate: cancer	2014 – 16	386	155.8	136.8	195.3	●	99.1
	6 Suicide rate	2014 – 16	30	12.7	9.9	18.3	●	4.6
Injuries and ill health	7 Killed and seriously injured on roads	2014 – 16	136	49.5	39.7	110.4	●	13.5
	8 Hospital stays for self-harm	2016/17	252	281.8	185.3	578.9	●	50.6
	9 Hip fractures in older people (aged 65+)	2016/17	111	620.8	575.0	854.2	●	364.7
	10 Cancer diagnosed at early stage	2016	185	49.5	52.6	39.3	○	61.9
	11 Diabetes diagnoses (aged 17+)	2017	n/a	74.0	77.1	54.3	●	96.3
	12 Dementia diagnoses (aged 65+)	2017	882	74.2	67.9	45.1	●	90.8
Behavioural risk factors	13 Alcohol-specific hospital stays (under 18s)	2014/15 – 16/17	56	96.6	34.2	100.0	●	6.5
	14 Alcohol-related harm hospital stays	2016/17	643	708.9	636.4	1,151.1	●	388.2
	15 Smoking prevalence in adults (aged 18+)	2017	16,336	22.2	14.9	24.8	●	4.6
	16 Physically active adults (aged 19+)	2016/17	n/a	63.2	66.0	53.3	●	78.8
	17 Excess weight in adults (aged 18+)	2016/17	n/a	58.4	61.3	74.9	●	40.5
Child health	18 Under 18 conceptions	2016	39	24.5	18.8	36.7	●	3.3
	19 Smoking status at time of delivery	2016/17	161	16.2	10.7	28.1	●	2.3
	20 Breastfeeding initiation	2016/17	839	73.8	74.5	37.9	●	96.7
	21 Infant mortality rate	2014 – 16	14	4.2	3.9	7.9	●	0.0
	22 Obese children (aged 10–11)	2016/17	196	20.7	20.0	29.2	●	8.8
Inequalities	23 Deprivation score (IMD 2015)	2015	n/a	33.1	21.8	42.0	○	5.0
	24 Smoking prevalence: routine and manual occupations	2017	n/a	24.2	25.7	48.7	●	5.1
Wider determinants of health	25 Children in low income families (under 16s)	2015	4,310	25.4	16.8	30.5	●	5.7
	26 GCSEs achieved	2015/16	478	49.9	57.8	44.8	●	78.7
	27 Employment rate (aged 16–64)	2016/17	37,700	66.6	74.4	59.8	●	88.5
	28 Statutory homelessness	2016/17	164	3.9	0.8			
	29 Violent crime (violence offences)	2016/17	2,860	31.3	20.0	42.2	●	5.7
Health protection	30 Excess winter deaths	Aug 2013 – Jul 2016	117	12.2	17.9	30.3	●	6.3
	31 New sexually transmitted infections	2017	466	793.1	793.8	3,215.3	●	266.6
	32 New cases of tuberculosis	2014 – 16	22	8.0	10.9	69.0	●	0.0

For full details on each indicator, see the definitions tab of the Health Profiles online tool: [www.healthprofiles.info](http://www.healthprofiles.info)

## Indicator value types

1, 2 Life expectancy - Years 3, 4, 5 Directly age-standardised rate per 100,000 population aged under 75 6 Directly age-standardised rate per 100,000 population aged 10 and over 7 Crude rate per 100,000 population 8 Directly age-standardised rate per 100,000 population 9 Directly age-standardised rate per 100,000 population aged 65 and over 10 Proportion - % of cancers diagnosed at stage 1 or 2 11 Proportion - % recorded diagnosis of diabetes as a proportion of the estimated number with diabetes 12 Proportion - % recorded diagnosis of dementia as a proportion of the estimated number with dementia 13 Crude rate per 100,000 population aged under 18 14 Directly age-standardised rate per 100,000 population 15, 16, 17 Proportion - % 18 Crude rate per 1,000 females aged 15 to 17 19, 20 Proportion - % 21 Crude rate per 1,000 live births 22 Proportion - % 23 Index of Multiple Deprivation (IMD) 2015 score 24, 25 Proportion - % 26 Proportion - % 5 A\*-C including English & Maths 27 Proportion - % 28 Crude rate per 1,000 households 29 Crude rate per 1,000 population 30 Ratio of excess winter deaths to average of non-winter deaths (%) 31 Crude rate per 100,000 population aged 15 to 64 (excluding Chlamydia) 32 Crude rate per 100,000 population

€"Regional" refers to the former government regions.

If 25% or more of areas have no data then the England range is not displayed.

Please send any enquiries to [healthprofiles@phe.gov.uk](mailto:healthprofiles@phe.gov.uk)

You may re-use this information (not including logos) free of charge in any format or medium, under the terms of the Open Government Licence. To view this licence, visit [www.nationalarchives.gov.uk/doc/open-government-licence/version/3](http://www.nationalarchives.gov.uk/doc/open-government-licence/version/3)