

Hastings Borough

Based on the LA view of the

JSNAA Scorecards 2017

East Sussex Public Health



Hastings Borough and wards



-  Hastings Borough boundary
-  Hastings wards
-  Built up areas

Table of Contents

Key statistics	5
Introduction	6
Population.....	7
Wider determinants.....	9
Overall health status.....	10
Healthy lifestyles	10
Pregnancy and infancy.....	10
Physical activity and excess weight.....	10
Smoking.....	10
Alcohol and drug misuse	11
Sexual health	11
Accidents and injuries	11
Health protection.....	11
Disease and poor health.....	11
Mental health and wellbeing.....	11
Circulatory.....	12
Cancer	12
Respiratory.....	12
Diabetes.....	12
Other chronic conditions.....	12
Avoidable admissions	13
Hospital admissions and attendances	13
Social care	15
Children's services	15

Carers.....	15
Adult social care.....	15
NHS dental services.....	16
GP patient survey.....	16
Appendix 1: Scorecard Summary Tables	17
Appendix 2: Acronyms and abbreviations	27

Key statistics

Key Statistics for Hastings			
Ref	Indicator	Number per year	Value
1.01	Population (count), Jun 2014	91,093	
1.02	Population aged 0-19 yrs (%), Jun 2014	21,476	24
1.03	Population aged 20-64 yrs (%), Jun 2014	52,481	58
1.04	Population aged 65+ yrs (%), Jun 2014	17,136	19
1.18	Live births per 1,000 women aged 15-44 yrs, 2014-15	1,092	65
2.02	Income Deprivation (as a percentage), from ID 2015	20,023	22
2.04	Children in low-income families (%), Aug 2014	4,875	29
3.06	Excess weight in 10-11 year olds (%), 2012/13-2014/15	273	33
3.09	GP reported prevalence of smoking at age 15+ (%), 2015/16 (M)	19,790	25
4.04	Life expectancy at birth (yrs), 2013-15		79.6
4.05	Life expectancy at age 75 (yrs), 2013-15		11.9
4.06	All-cause mortality (SMR), 2013-15	980	120
4.08	Mortality from causes considered preventable (SMR), 2014-15	194	137
4.15	GP reported prevalence of dementia (%), 2015/16 (M)	789	0.8
4.23	GP reported prevalence of hypertension (%), 2015/16 (M)	13,939	14.8
4.26	GP reported prevalence of CHD (%), 2015/16 (M)	3,168	3.4
4.29	GP reported prevalence of stroke or TIA (%), 2015/16 (M)	1,933	2.1
4.32	GP reported prevalence of atrial fibrillation (%), 2015/16 (M)	1,818	1.9
4.34	GP reported prevalence of heart failure (%), 2015/16 (M)	835	0.9
4.49	GP reported prevalence of asthma (%), 2015/16 (M)	5,311	5.6
4.52	GP reported prevalence of COPD (%), 2015/16 (M)	2,388	2.5
4.57	GP reported prevalence of diabetes aged 17+ (%), 2015/16 (M)	5,034	6.6
4.60	GP reported prevalence of epilepsy aged 18+ (%), 2015/16 (M)	745	1.0
4.62	GP reported prevalence of CKD aged 18+ (%), 2015/16 (M)	2,705	3.6
4.65	GP reported prevalence of learning disabilities aged 18+ (%), 2015/16 (M)	607	0.7
4.72	First outpatient attendances (SAR), 2015/16	38,080	110
4.74	All MIU and A&E attendances (SAR), 2015/16	28,598	108
4.78	All elective admissions (SAR), 2014/15 to 2015/16	26,979	102
4.80	All emergency admissions (SAR), 2014/15 to 2015/16	20,846	127
6.01	People providing one hour or more of unpaid care per week (%), 2011	9,442	10.5

Significantly worse than East Sussex	Significantly better than East Sussex
Significantly higher than East Sussex	Significantly lower than East Sussex
Not significantly different to East Sussex	Significance not tested

Introduction

This narrative describes Hastings Borough in the East Sussex context. It is based on 2017 JSNAA scorecard data, presented in the form of indicator tables (Appendix 1) in which East Sussex districts and boroughs are RAG-rated against East Sussex. Further tables and charts summarise key statistics and specific topics (such as hospital admission and attendance rates) for this borough.

The RAG-rated tables highlight statistically significant differences between Hastings Borough and East Sussex. Individual JSNAA scorecards are referenced alongside the indicator titles; if data has been modelled from NHS to LA geographies indicator titles are flagged with (M).

Here 'significance' refers to statistical significance at the 95% confidence level.

In the tables (Appendix 1) statistically significant differences between this borough and East Sussex are flagged in red/green and dark blue/light blue and the indicator values are given. But note that, for values based on large numbers, even small, possibly unimportant, differences can be statistically significant. Conversely, values based on small numbers can be substantially, but not (in statistical terms) significantly different to East Sussex.

Some rates are age and/or sex standardised. For those that are not, such as the GP-reported prevalence of diabetes and other chronic diseases, it is important to take into account the age profile of the population, as they are likely to be higher in areas with older age profiles.

For more in-depth information on how wards, as well as districts/boroughs, compare to East Sussex, this report should be read alongside the LA view JSNAA indicator scorecards.

LA and NHS view JSNAA scorecards and area summaries can be downloaded from www.eastsussexjsna.org.uk/scorecards.

The following products can also be downloaded from the East Sussex JSNAA website:

GP Practice Profiles and Locality/Community of Practice Profiles

Spine charts are used to compare the GP practice or locality/community of practice to East Sussex for all available JSNAA indicators.

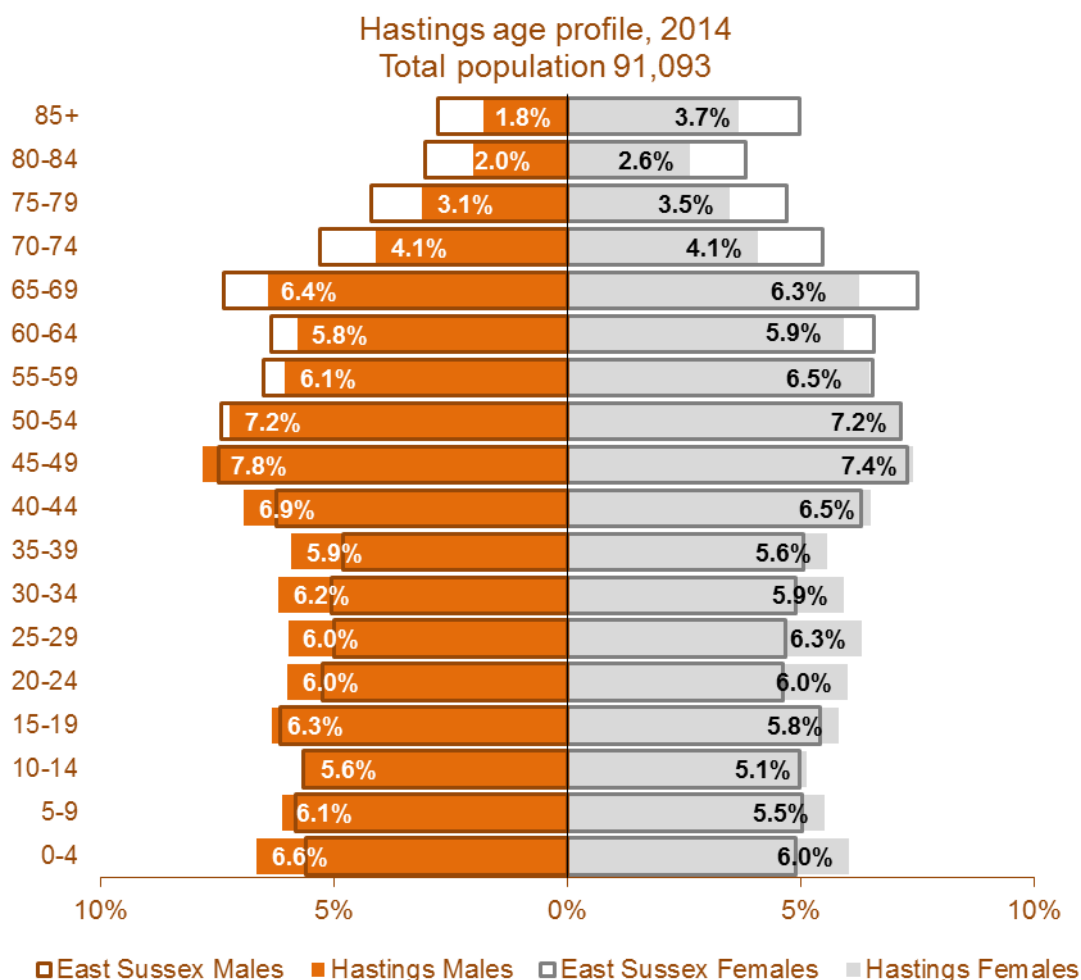
See <http://www.eastsussexjsna.org.uk/PracticeProfiles2017>

Local Needs and Assets Profiles

East Sussex, its districts/boroughs and CCGs are compared to England. RAG-rated tables similar to those in Appendix 1 (but with England as the benchmark) are included.

See <http://www.eastsussexjsna.org.uk/overviews/localneedsprofile.aspx>

Population



Hastings is the smallest district/borough in East Sussex. It has the highest percentage of people aged under 65 and the lowest percentage of people aged 65 years or over, of all East Sussex districts/boroughs.

Table 1 shows the estimated population changes between 2015 and 2021 for specific age groups as well as all ages. Using projections modelled from East Sussex districts and boroughs, the table shows that over the next 6 years some age groups are projected to increase in size whilst others will decrease in size. The net effect is that the population of Hastings is estimated to increase, with the largest estimated increase in those aged 65 years and over.

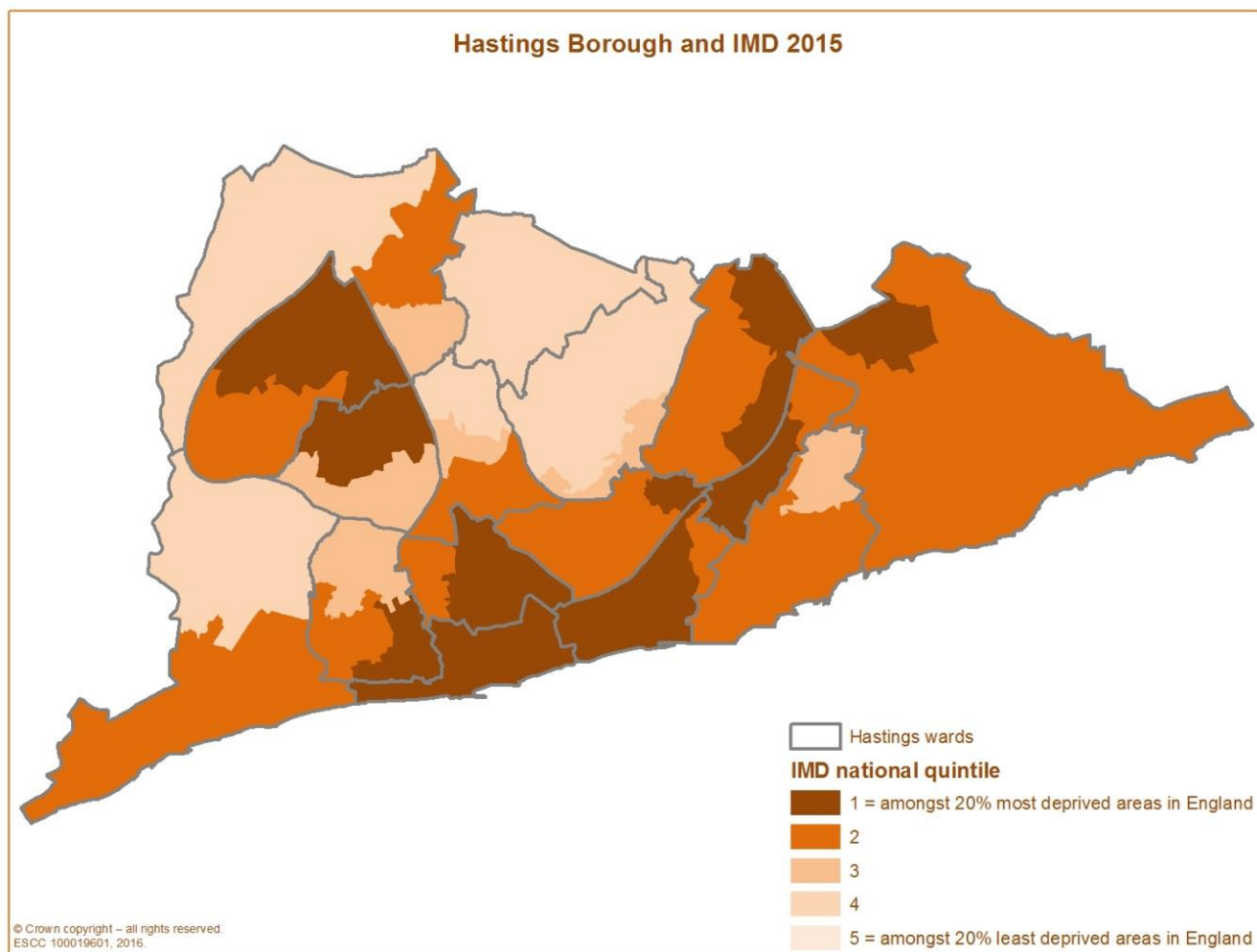
Table 1: Population projections for all persons (number and percentage change) showing the increase (positive) or decrease (negative) from 2015 to 2021 (modelled)

Population projections from 2015 to 2021				
Indicator	East Sussex		Hastings	
	Number	%	Number	%
0-19 years	900	0.8%	-300	-1.3%
20-64 years	-1,950	-0.7%	-1,100	-2.1%
65+ years	14,950	11.0%	2,000	11.4%
85+ years	3,450	16.0%	200	8%
All Ages	14,000	2.6%	600	0.7%

The dependency ratio (of non-working age people compared to working age people) for the borough is significantly lower than for East Sussex, and the lowest of all the districts/boroughs. Hastings is significantly higher for non-white British people and pupils with English as an additional language than East Sussex.

Compared to East Sussex Hastings has a significantly higher rate of births to teenage mothers, and overall birth rate, and the highest rates of all East Sussex districts/boroughs. It has the lowest birth rate of all for mothers aged 35 years and over. Hastings has the highest percentage of lone parent households, but the lowest percentage of households with older people living alone.

Wider determinants



Hastings has the highest income and employment deprivation of all East Sussex districts/boroughs, including income deprivation affecting children and older people. It has the highest rates of children receiving the pupil premium, working age people claiming ESA, JSA and UC and households in fuel poverty of all the districts/boroughs.

It has the highest percentage of households with no cars or vans, but also the highest percentage that are able to access a GP practice in 15 minutes by public transport or walking.

Hastings has the highest rates of children with SEN on SEN Support, SEN or an EHCP, young people NEET and working age people with no or low qualifications. It has similar levels of educational achievement for pupils at age 5, 11 and 16 to East Sussex.

Compared to East Sussex significantly more households are overcrowded, and significantly less are owned but significantly more are rented. The percentage of people living in care homes with nursing is similar to East Sussex, but a significantly higher percentage live in care homes without nursing.

Across almost all crime indicators Hastings has the worst rates of all East Sussex districts/boroughs and significantly worse than East Sussex.

Overall health status

Hastings has amongst the worst levels of self-reported ill health and LLTI or disability of all districts/boroughs. It has the worst life expectancy at birth and at age 75, and premature and preventable mortality, of all the districts/boroughs, and these are substantially and significantly worse than for East Sussex.

Healthy lifestyles

Pregnancy and infancy

Compared to East Sussex this borough has significantly lower rates of breastfeeding initiation and breastfeeding at 6-8 weeks, and the lowest rates of all the districts/boroughs.

Physical activity and excess weight

It has the lowest levels of adults achieving 150 minutes physical activity per week, and the highest levels of overweight or obese reception year and year 6 children (significantly higher than East Sussex).

Smoking

It has significantly higher rates of smokers and smoking quitters than East Sussex and the highest of all the districts/boroughs. It is also the district/borough with the highest smoking-attributable mortality and this is significantly higher than for East Sussex.

Alcohol and drug misuse

This borough has the highest rates (significantly higher than East Sussex) of young people and adults in drug/alcohol treatment and the highest alcohol-related hospital admissions (significantly higher than East Sussex) and mortality of all district/boroughs.

Sexual health

Hastings Borough has the highest under 18s conception rate and chlamydia detection rates of all districts/boroughs. Under 18s conceptions and chlamydia detection for people aged 25+ are significantly higher than in East Sussex.

Accidents and injuries

It has the highest A&E attendances and emergency admissions for accidents and injuries in 0-4 year olds of all districts/boroughs, and significantly higher than for East Sussex. It also has the highest emergency admissions for older children and young people, and for the 15-24 year olds significantly higher than for East Sussex. It has a significantly lower rate of people killed or seriously injured on the roads than East Sussex.

Health protection

Hastings Borough is significantly better than East Sussex for eligible people receiving an NHS health check but significantly worse for uptake of cervical, breast and bowel cancer screening. Immunisations by age 5 and seasonal flu vaccination for persons aged 65 years or over are significantly worse than for East Sussex. Uptake of all other immunisations is similar to East Sussex.

Disease and poor health

Mental health and wellbeing

Compared to East Sussex Hastings has significantly higher rates for: the incidence of depression and prevalence of severe mental illness, emergency admissions due to mental health or self-harm and for persons with severe mental illness, working age people claiming ESA due to mental health problems and the CAMHS caseload. For most of these indicators

Hastings has the highest rates of all the districts/boroughs. The prevalence of dementia is significantly lower (not age-standardised) but emergency admissions for persons with dementia are significantly higher and the highest of all the districts/boroughs.

Circulatory

Compared to East Sussex Hastings has significantly lower prevalences (not age-standardised) of high blood pressure, CHD, stroke and atrial fibrillation. It has significantly higher emergency admissions for CHD and premature mortality from circulatory diseases, and the highest rates of all the district/boroughs.

Cancer

Hastings has significantly higher premature mortality from cancer than East Sussex and the incidence and mortality for lung cancer is also significantly higher. The incidence and mortality for colorectal, breast and prostate cancers are similar to East Sussex.

Respiratory

Compared to East Sussex Hastings has a lower asthma prevalence (not age-standardised) but significantly higher emergency admissions due to asthma (and per 1,000 registered asthmatics), and the highest rates of all the districts/boroughs. COPD prevalence (not age-standardised), admissions and mortality are all significantly higher than for East Sussex, as is premature mortality from respiratory diseases.

Diabetes

Hastings has a significantly higher prevalence (not age-standardised) of diabetes.

Other chronic conditions

Hastings has significantly higher, and the highest of all local authorities, premature mortality from liver disease. It also has a significantly higher prevalence of epilepsy and learning disabilities.

Avoidable admissions

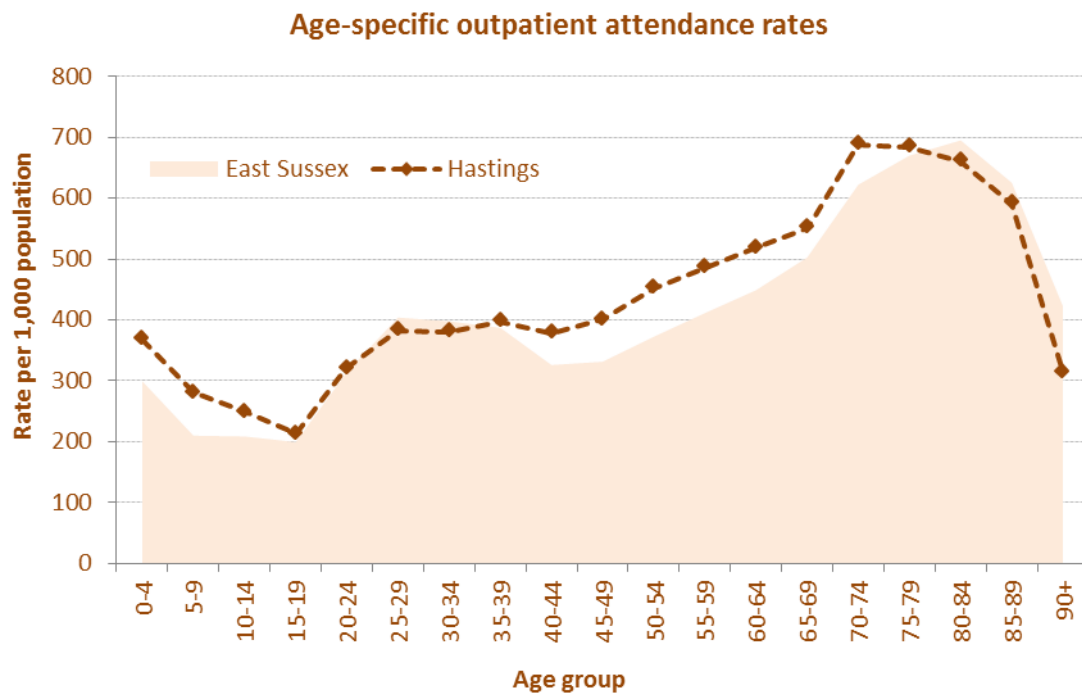
It has significantly higher emergency admissions in under 20s for diabetes/epilepsy/asthma and significantly higher emergency admissions for chronic, acute and other/vaccine preventable ACS conditions.

Hospital admissions and attendances

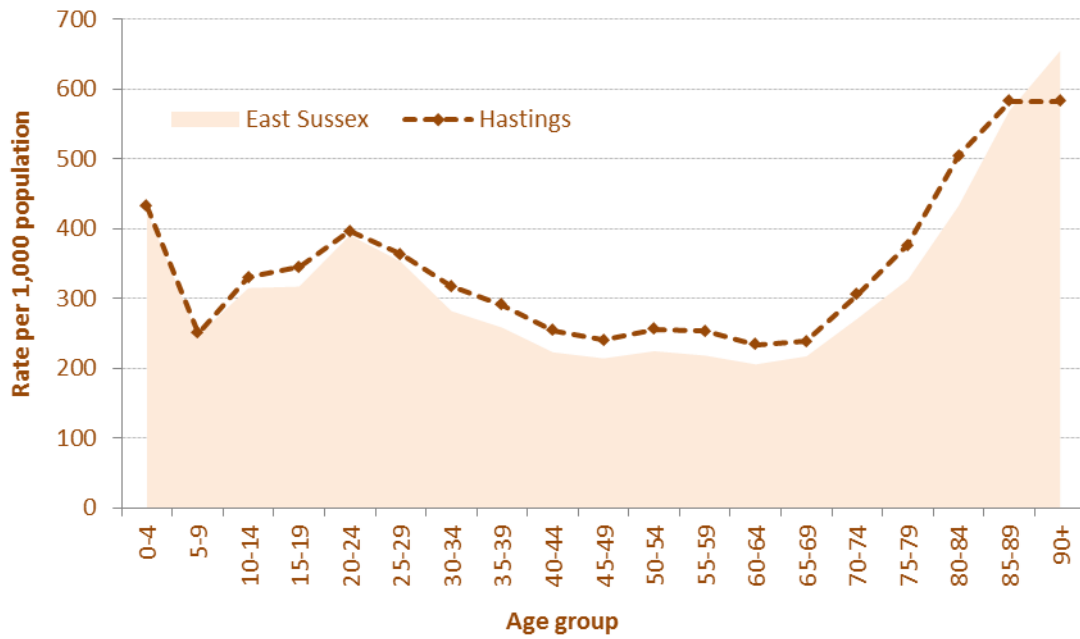
Hastings has significantly higher hospital admissions and attendances than East Sussex except in the case of MIU/A&E attendances for under 5s, elective admissions for people aged 65+ and emergency admissions for people aged 85+.

It has the highest rates of all East Sussex local authorities for outpatient attendances, outpatient DNAs, MIU/A&E attendances for people aged 15-29, and for emergency admissions for all ages, and for people aged 70+.

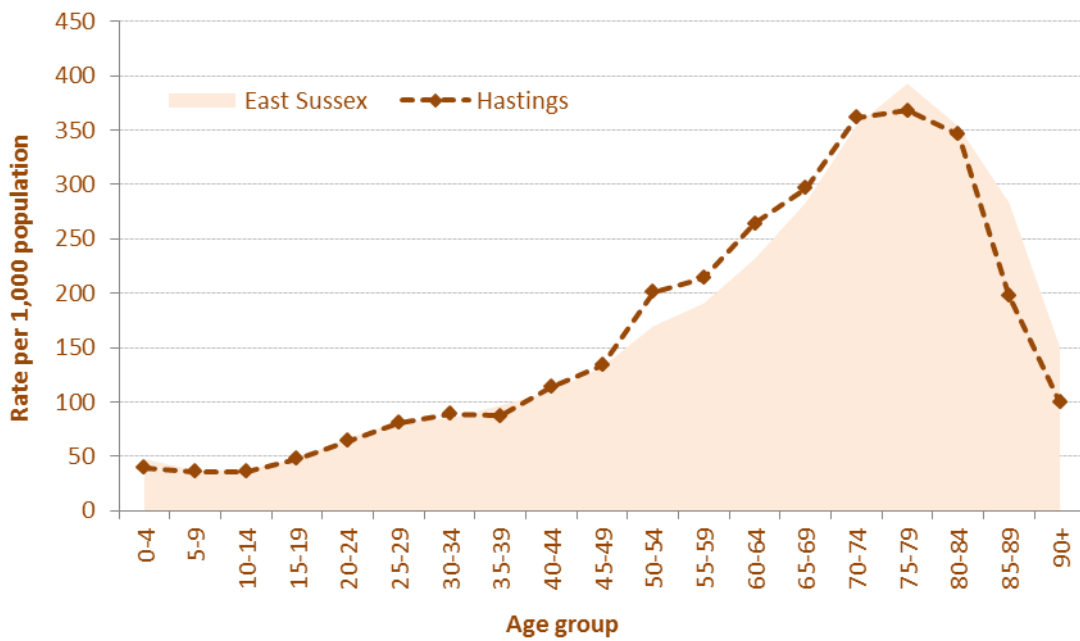
The following graphs present the age-specific overall attendance and admission rates for the borough compared to East Sussex.

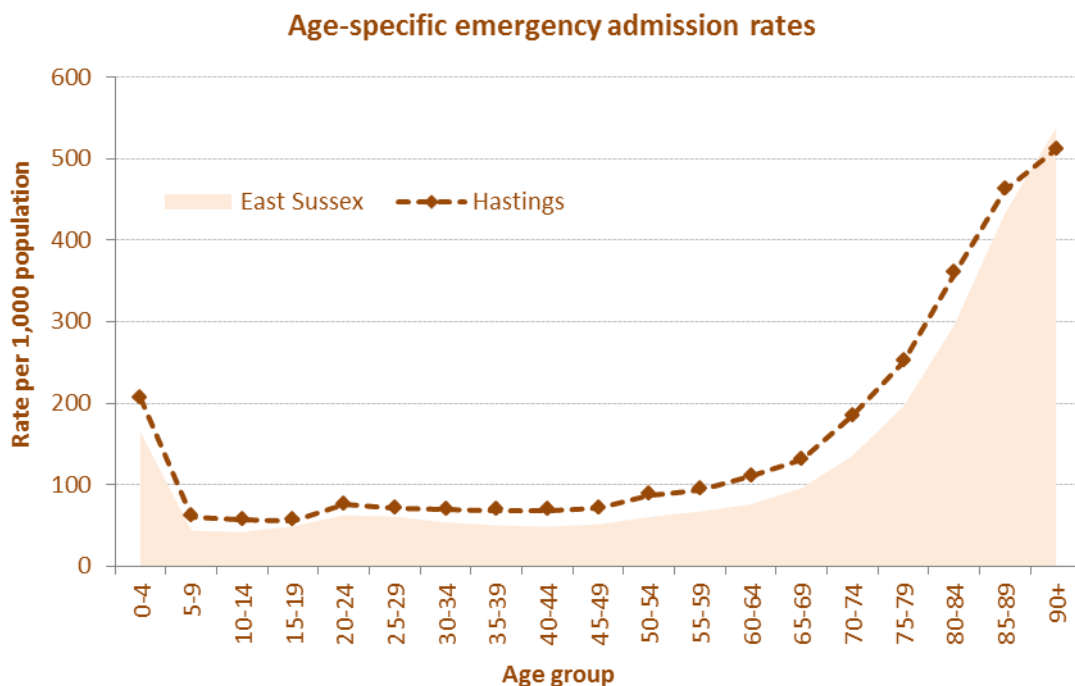


Age-specific A&E/MIU attendance rates



Age-specific elective admission rates





Social care

Children's services

Hastings is significantly higher (and the highest of all local authorities) for referrals to children's social care, children on child protection plans and looked after children.

Carers

Compared to East Sussex Hastings is slightly lower for people providing one hour or more of unpaid care per week but significantly higher, and the highest of all districts/boroughs, for unpaid carers providing 20 hours or more care per week, working age people claiming Carers Allowance, carers known to adult social care and those receiving self-directed support.

Adult social care

Compared to East Sussex Hastings is significantly higher for requests for ASC support, and adults receiving direct payments, self-directed support, long term support (and highest of all districts/boroughs for older people receiving long term support) and people in council

supported residential or nursing care. It is significantly lower for older people discharged from hospital to intermediate care.

NHS dental services

Compared to East Sussex a similar percentage of children, but significantly higher percentages of working age and older people, access East Sussex NHS general dental services.

GP patient survey

The percentage of patients responding to the GP Patient Survey, reporting a good experience of their surgery and of making appointments, and that GPs involve them in decisions on care are all significantly worse than for East Sussex. The percentage of patients reporting that the nurse was good at involving them in decisions on care is significantly higher.

Appendix 1: Scorecard Summary Tables

Significantly worse than East Sussex	Significantly better than East Sussex	Significantly higher than East Sussex	Significantly lower than East Sussex	Not significantly different to East Sussex	Significance not tested
--------------------------------------	---------------------------------------	---------------------------------------	--------------------------------------	--	-------------------------

Ref	Indicator	Population					
		East Sussex	Eastbourne	Hastings	Lewes	Rother	Wealden
1.11	Dependency ratio, Jun 2014	0.72	0.70	0.60	0.72	0.85	0.73
1.12	Lone older person (aged 65+) households (%), 2011	16	17	13	16	20	15
1.13	Lone parent households (%), 2011	6	7	8	6	5	5
1.14	Non-White British population (%), 2011	8	13	11	7	6	6
1.15	Non-White British pupils (%), 2016	12	19	15	11	9	9
1.16	Pupils with English as an additional language (per 1,000), 2016	56	117	69	37	35	27
1.18	Live births per 1,000 women aged 15-44 yrs, 2014-15	59	61	65	56	56	56
1.19	Live births per 1,000 women aged 15-19 yrs, 2014-15	13	19	22	8	11	8
1.20	Live births per 1,000 women aged 35-44 yrs, 2014-15	34	35	32	36	34	34

Wider determinants - Economy, income and transport

Ref	Indicator	East Sussex	Eastbourne	Hastings	Lewes	Rother	Wealden
2.02	Income Deprivation (as a percentage), from ID 2015	13	15	22	11	13	8
2.04	Children in low-income families (%), Aug 2014	19	21	29	16	19	11
2.05	Income Deprivation Affecting Older People Index (IDAOPI) (as a percentage), from ID 2015	13	15	22	11	12	10
2.06	Households in fuel poverty (%), 2014	9	9	12	8	9	8
2.07	Pupils receiving the pupil premium (%), Jan 2016	21	23	31	18	21	13
2.08	Households with dependent children and no adults in employment (%), 2011	13	14	21	11	13	8
2.09	Employment Deprivation (as a percentage), from ID 2015	12	13	19	10	12	7
2.10	Working age people claiming JSA and Universal Credit (%), Aug 2016	1.3	1.8	2.3	1.1	1.2	0.6
2.11	Working age people claiming ESA (%), Aug 2016	6.1	7.3	10.0	5.0	6.0	3.7
2.12	Households with no cars or vans (%), 2011	22	29	33	20	19	12
2.13	Households able to access a GP practice in 15 min by public transport/walking (%), 2014	78	82	90	72	79	69

Wider determinants - Education

Ref	Indicator	East Sussex	Eastbourne	Hastings	Lewes	Rother	Wealden
2.16	Pupils (age 5) reaching a good level of development in the EYFS (%), Jun 2016	75	74	76	75	74	77
2.17	Pupils (at age 11) achieving the expected standard at Key Stage 2, Jun 2016	50	51	50	52	46	50
2.18	Average GCSE Attainment 8 score for pupils (at age 16) at Key Stage 4, Jun 2016	49	49	46	50	48	51
2.19	Working age population with no or low qualifications (%), 2011	30	30	36	29	31	27
2.20	Pupils with special educational needs (SEN) on SEN Support (per 100,000), Jan 2016	90	86	104	99	93	75
2.21	Pupils with a statement of SEN or an EHCP (per 100,000), Jan 2016	36	34	41	35	38	32
2.22	Young people aged 16-18 yrs NEET (monthly rate per 1,000), Nov 2015 to Jan 2016	31	42	44	29	26	22

Wider determinants - Housing

Ref	Indicator	East Sussex	Eastbourne	Hastings	Lewes	Rother	Wealden
2.25	Households that are overcrowded (%), 2011	7	10	9	6	5	4
2.26	Households with no central heating (%), 2011	2.8	2.9	4.5	2.3	2.8	2.0
2.27	Households owned outright or with a mortgage/loan (%), 2011	69	62	55	73	74	79
2.28	Socially rented households (%), 2011	11	13	15	11	10	8
2.29	Privately rented households (%), 2011	18	23	29	14	14	11
2.30	Persons living in care homes with nursing (%), 2011	0.5	0.5	0.5	0.3	0.7	0.4
2.31	Persons living in care homes without nursing (%), 2011	0.8	0.9	1.0	0.6	1.0	0.7

Wider determinants - Crime

Ref	Indicator	East Sussex	Eastbourne	Hastings	Lewes	Rother	Wealden
2.33	Recorded crimes (per 1,000 population), 2015/16	50	64	85	42	43	31
2.34	Recorded incidents of Anti-Social Behaviour (per 1,000 population), 2015/16	24	32	41	21	19	13
2.35	A&E attendances by 15-59 yr olds for assaults, 8pm-4am (per 1,000), 2013/14 to 2015/16	1.6	2.4	2.2	1.3	1.1	0.9
2.36	Emergency admissions for violence (SAR), 2013/14 to 2015/16	100	102	181	103	77	54

Overall health status

Ref	Indicator	East Sussex	Eastbourne	Hastings	Lewes	Rother	Wealden
4.01	People reporting that their health is bad or very bad (%), 2011	6	6	7	5	6	4
4.02	People reporting a limiting long-term health problem or disability (%), 2011	20	21	22	20	23	18
4.04	Life expectancy at birth (yrs), 2013-15	82.1	81.7	79.6	83.4	81.8	83.2
4.05	Life expectancy at age 75 (yrs), 2013-15	13.0	12.9	11.9	13.8	12.8	13.1
4.07	Premature all-cause mortality (SMR), 2013-15	100	108	138	89	99	83
4.08	Mortality from causes considered preventable (SMR), 2014-15	100	105	137	90	106	81

Healthy Lifestyles - Pregnancy and infancy

Ref	Indicator	East Sussex	Eastbourne	Hastings	Lewes	Rother	Wealden
3.01	Low birth weight (%), 2014-15	6	7	7	6	6	5
3.02	Breastfeeding initiation (%), 2014/15	79	79	71	85	74	84
3.03	Breastfeeding prevalence at 6-8 weeks after birth (%), 2015/16	52	50	42	60	52	58
4.09	Infant mortality (per 1,000 live births), 2014-15	3.5	6.0	4.1			2.2

Healthy Lifestyles - Physical activity and excess weight

Ref	Indicator	East Sussex	Eastbourne	Hastings	Lewes	Rother	Wealden
3.04	Adults achieving 150+ minutes physical activity per week (%), 2015	59	56	55	58	60	63
3.05	Excess weight in 4-5 year olds (%), 2012/13-2014/15	21	22	24	20	20	19
3.06	Excess weight in 10-11 year olds (%), 2012/13-2014/15	30	33	33	27	33	27
3.07	Excess weight in Adults (%), 2012/13-2014/15	64.5	64.5	64.2	64.6	65.8	63.8

Healthy Lifestyles - Smoking

Ref	Indicator	East Sussex	Eastbourne	Hastings	Lewes	Rother	Wealden
3.09	GP reported prevalence of smoking at age 15+ (%), 2015/16 (M)	17	18	25	16	16	14
3.10	Smoking quitters at 4 weeks (per 100,000 aged 16+ yrs), 2015/16	410	445	619	477	405	226
3.11	Mothers known to be smokers at the time of delivery (%), 2014/15	14	15	24	7	16	7
3.12	Smoking-attributable deaths in persons aged 35+ yrs (DSR per 100,000), 2012-2014	246	260	335	228	244	212

Healthy Lifestyles - Alcohol and drug misuse

Ref	Indicator	East Sussex	Eastbourne	Hastings	Lewes	Rother	Wealden
3.13	Young people in drug or alcohol treatment (per 10,000 aged 0-18 yrs), Sep 14 to Aug 16	16	22	25	15	11	10
3.14	Adults aged 19+ in alcohol treatment (per 100,000), 2015/16	20	24	35	15	15	14
3.15	Alcohol-related admissions (DSR per 100,000), 2014/15	571	663	776	512	569	436
3.16	Alcohol-related mortality (DSR per 100,000), 2014	42	40	54	35	46	39
3.17	Adults aged 19+ in drug treatment (per 100,000), 2015/16	37	58	86	25	21	13

Healthy Lifestyles - Sexual health

Ref	Indicator	East Sussex	Eastbourne	Hastings	Lewes	Rother	Wealden
3.30	Under 18s conceptions (per 1,000 females aged 15-17), 2014	20	21	32	17	19	14
3.31	Chlamydia detection rate in persons aged 15-24 (per 100,000), 2015	1,616	1,826	1,974	1,389	1,584	1,369
3.32	Chlamydia detection rate in persons aged 25+ (per 100,000), 2015	89	120	148	84	73	49
3.33	Gonorrhoea diagnostic rate (per 100,000), 2015	30	35	29	51	18	21

Healthy Lifestyles - Accidents and injuries

Ref	Indicator	East Sussex	Eastbourne	Hastings	Lewes	Rother	Wealden
3.34	A&E attendances for accidents & injuries in 0-4 yr olds (per 10,000), 2015/16	1,291	1,523	1,683	1,061	1,406	910
3.35	Emergency admissions for accidents & injuries in 0-4 yr olds (per 10,000), 2013/14 to 2015/16	124	132	174	86	149	93
3.36	Emergency admissions for accidents & injuries in 5-14 yr olds (per 10,000), 2013/14 to 2015/16	96	87	111	101	102	86
3.37	Emergency admissions for accidents and injuries in 15-24 yr olds (per 10,000), 2013/14 to 15/16	140	126	162	147	150	127
3.38	Emergency admissions for falls injuries for people aged 65+ (SAR), 2014/15 to 2015/16	100	107	103	93	93	104
3.39	People killed or seriously injured on East Sussex roads (per 100,000), 2012 to 2014	64	48	50	54	84	80

Health protection - Health checks and screening

Ref	Indicator	East Sussex	Eastbourne	Hastings	Lewes	Rother	Wealden
3.18	Eligible people aged 40-74 who received an NHS Health Check (%), Apr 2013 to Mar 2016 (M)	33	37	36	27	38	30
3.19	Eligible women aged 25-64 screened for cervical cancer (%), at Mar 2015 (M)	76	73	73	77	77	76
3.20	Eligible women aged 50-70 screened for breast cancer (%), at Mar 2015 (M)	74	71	70	77	74	75
3.21	Eligible people aged 60-69 screened for bowel cancer (%), at Mar 2016 (M)	60	58	55	62	63	62

Health protection - Immunisation

Ref	Indicator	East Sussex	Eastbourne	Hastings	Lewes	Rother	Wealden
3.22	Children immunised for DTaP/IPV/Hib by age 1 (%), 2015/16 (M)	94	96	92	94	93	94
3.23	Children immunised for pneumococcal infection by age 2 (%), Apr 2015 to Dec 2016 (M)	92	94	92	93	90	91
3.24	Children immunised for Hib/MenC by age 2 (%), 2015/16 (M)	92	95	92	93	93	91
3.25	Children immunised for measles, mumps and rubella (MMR) by age 2 (%), 2015/16 (M)	92	93	95	93	93	90
3.26	Children immunised for DTaP/IPV/Hib by age 5 (%), 2015/16 (M)	89	89	86	90	90	91
3.27	Children immunised for measles, mumps and rubella (MMR) by age 5 (%), 2015/16 (M)	89	90	86	90	90	90
3.28	People aged 65+ receiving seasonal flu vaccination (%), Sep 2015 to Jan 2016 (M)	70	72	66	69	73	67
3.29	People aged 65+ ever receiving a pneumococcal vaccination (%), at 31 Mar 2016 (M)	69	67	69	68	75	65

Disease and poor health - Mental health

Ref	Indicator	East Sussex	Eastbourne	Hastings	Lewes	Rother	Wealden
4.10	GP reported incidence of depression in persons aged 18+ (%), 2015/16 (M)	10.3	12.0	11.4	9.3	9.5	9.8
4.11	GP reported prevalence of severe mental illness (%), 2015/16 (M)	1.1	1.2	1.5	1.0	1.0	0.8
4.12	Emergency admissions for mental and behavioural disorders (SAR), 2014/15 to 2015/16	100	118	148	96	94	67
4.13	Emergency admissions, people with severe mental illness (SAR), 2014/15 & 2015/16	100	107	169	101	87	63
4.14	Emergency admissions relating to self-harm (SAR), 2014/15 to 2015/16	100	103	145	110	97	64
4.15	GP reported prevalence of dementia (%), 2015/16 (M)	1.1	1.3	0.8	1.0	1.2	1.0
4.16	GP reported versus expected prevalence of dementia at age 65+ (ratio), 2014/15 (M)	61					
4.18	Emergency admissions, people with dementia (SAR), 2014/15 & 2015/16	100	105	128	99	90	93
4.19	CAMHS caseload (per 1,000 aged 0-18 yrs), Mar 2016	19	18	23	18	20	15
4.20	Working age people claiming ESA for mental health problems (per 1,000), Feb 2016	29	36	50	23	27	16
4.22	Mortality from suicide (SMR), 2012-15	100	107	123	88	80	102

Disease and poor health - Circulatory

Ref	Indicator	East Sussex	Eastbourne	Hastings	Lewes	Rother	Wealden
4.23	GP reported prevalence of hypertension (%), 2015/16 (M)	16.6	15.9	14.8	16.0	19.9	16.7
4.24	GP reported versus expected prevalence of hypertension (ratio), 2014/15 (M)	61	60	59	60	63	61
4.25	GP reported prevalence of high blood pressure without established CVD (%), 2015/16 (M)	1.3	1.3	1.2	1.0	1.4	1.4
4.26	GP reported prevalence of CHD (%), 2015/16 (M)	3.8	3.7	3.4	3.7	4.6	3.5
4.27	Emergency admissions for CHD (SAR), 2014/15 to 2015/16	100	105	121	112	100	80
4.28	Emergency admissions for CHD per 1,000 on GP CHD registers, 2015/16 (M)	56	46	67	69	56	49
4.29	GP reported prevalence of stroke or TIA (%), 2015/16 (M)	2.3	2.3	2.1	2.2	2.8	2.2
4.30	Emergency admissions for stroke (SAR), 2014/15 to 2015/16	100	98	111	106	90	99
4.31	Mortality from stroke (SMR), 2012-15	100	99	110	98	103	95
4.32	GP reported prevalence of atrial fibrillation (%), 2015/16 (M)	2.6	2.7	1.9	2.6	3.3	2.7
4.33	GP reported versus expected prevalence of atrial fibrillation (ratio), 2014/15 (M)	72	76	64	71	73	73
4.34	GP reported prevalence of heart failure (%), 2015/16 (M)	1.0	1.0	0.9	0.9	1.1	0.9
4.36	Premature mortality from circulatory diseases (SMR), 2012-15	100	112	148	94	98	75

Disease and poor health - Cancer

Ref	Indicator	East Sussex	Eastbourne	Hastings	Lewes	Rother	Wealden
4.38	Incidence of all cancers (DSR per 100,000), 2012-2014	584	586	602	595	590	568
4.39	Incidence of lung cancer (DSR 100,000), 2012-2014	64	63	83	61	65	57
4.40	Mortality from lung cancer (DSR per 100,000), 2012-14	51	51	66	48	52	45
4.41	Incidence of colorectal cancer (DSR 100,000), 2012-2014	71	72	72	70	74	69
4.42	Mortality from colorectal cancer (DSR per 100,000), 2012-14	28	26	32	26	28	30
4.43	Incidence of breast cancer (DSR per 100,000 women), 2012-2014	172	156	179	167	169	187
4.44	Mortality from breast cancer (DSR per 100,000 women), 2012-14	40	38	43	34	41	42
4.45	Incidence of prostate cancer (DSR per 100,000 men), 2012-2014	178	174	151	187	184	182
4.46	Mortality from prostate cancer (DSR per 100,000 men), 2012-14	46	43	38	52	49	43
4.47	Mortality from all cancers (DSR per 100,000), 2012-14	271	281	296	261	269	262
4.48	Premature mortality from cancer (SMR), 2012-15	100	108	120	94	99	90

Disease and poor health - Respiratory

Ref	Indicator	East Sussex	Eastbourne	Hastings	Lewes	Rother	Wealden
4.49	GP reported prevalence of asthma (%), 2015/16 (M)	6.2	6.4	5.6	6.4	6.3	6.1
4.50	Emergency admissions for asthma (SAR), 2014/15 to 2015/16	100	119	146	72	102	77
4.51	Emergency admissions for asthma per 1,000 on GP asthma registers, 2015/16 (M)	15	17	27	11	13	10
4.52	GP reported prevalence of COPD (%), 2015/16 (M)	2.1	2.1	2.5	1.9	2.3	1.9
4.53	Emergency admissions for COPD (SAR), 2014/15 to 2015/16	100	99	175	87	99	75
4.54	Emergency admissions for COPD per 1,000 on GP COPD registers, 2015/16 (M)	78	67	97	86	79	65
4.55	Mortality from COPD (SMR), 2012-15	100	96	151	91	103	83
4.56	Premature mortality from respiratory diseases (SMR), 2012-15	100	111	180	81	98	68

Disease and poor health - Diabetes

Ref	Indicator	East Sussex	Eastbourne	Hastings	Lewes	Rother	Wealden
4.57	GP reported prevalence of diabetes aged 17+ (%), 2015/16 (M)	6.3	6.0	6.6	6.1	7.1	5.8
4.58	Emergency admissions for diabetes (SAR), 2014/15 to 2015/16	100	123	124	116	83	71
4.59	Emergency admissions for diabetes per 1,000 on GP diabetes registers, 2015/16 (M)	13	17	15	18	8	10

Disease and poor health - Other conditions

Ref	Indicator	East Sussex	Eastbourne	Hastings	Lewes	Rother	Wealden
4.60	GP reported prevalence of epilepsy aged 18+ (%), 2015/16 (M)	0.8	0.8	1.0	0.7	0.8	0.8
4.61	Premature mortality from liver disease (SMR), 2012-15	100	85	188	83	95	76
4.62	GP reported prevalence of CKD aged 18+ (%), 2015/16 (M)	5.1	5.8	3.6	5.5	4.8	5.3
4.65	GP reported prevalence of learning disabilities aged 18+ (%), 2015/16 (M)	0.5	0.5	0.7	0.4	0.5	0.5

Disease and poor health - Avoidable admissions

Ref	Indicator	East Sussex	Eastbourne	Hastings	Lewes	Rother	Wealden
4.67	Emergency admissions for LRTIs in under 20s (SAR), 2014/15 to 2015/16	100	103	102	142	80	79
4.68	Emergency admissions for diabetes, epilepsy, asthma in under 20s (SAR), 2014/15 to 2015/16	100	134	130	72	103	74
4.69	Emergency admissions for chronic ACS conditions (SAR), 2014/15 to 2015/16	100	106	145	94	98	78
4.70	Emergency admissions for acute ACS conditions (SAR), 2014/15 to 2015/16	100	121	121	87	91	88
4.71	Emergency admissions for other & vaccine preventable ACS conditions (SAR), 2014/15 to 2015/16	100	100	128	115	86	86

Disease and poor health - Hospital attendances and admissions

Ref	Indicator	East Sussex	Eastbourne	Hastings	Lewes	Rother	Wealden
4.72	First outpatient attendances (SAR), 2015/16	100	96	110	102	98	97
4.73	Outpatient appointments where the patient did not attend (%), 2015/16	7	8	10	7	7	6
4.74	All MIU and A&E attendances (SAR), 2015/16	100	99	108	109	83	100
4.75	MIU and A&E attendances for 0-4 yr olds (per 1,000), 2015/16	425	399	432	535	355	403
4.76	MIU and A&E attendances for persons aged 15-29 (per 1,000), 2015/16	352	353	368	361	309	356
4.77	MIU and A&E attendances for persons aged 70+ (per 1,000), 2015/16	394	387	423	444	328	402
4.78	All elective admissions (SAR), 2014/15 to 2015/16	100	108	102	99	95	98
4.79	Elective admissions for persons aged 65+ (SAR), 2014/15 to 2015/16	320	351	309	319	302	319
4.80	All emergency admissions (SAR), 2014/15 to 2015/16	100	105	127	93	98	88
4.81	Emergency admissions for persons aged 70-84 yrs (SAR), 2014/15 to 2015/16	198	206	249	194	185	182
4.82	Emergency admissions for persons aged 85+ (SAR), 2014/15 to 2015/16	475	471	482	478	472	477

Children's services

Ref	Indicator	East Sussex	Eastbourne	Hastings	Lewes	Rother	Wealden
6.07	Referrals to children's social care (per 1,000 aged under 18 yrs), Feb 2015 to Jan 2016	30	34	45	29	25	19
6.08	Children on a child protection plan (per 1,000 aged under 18 yrs), 31 March 2016	4	5	9	2	4	2
6.09	Looked after children (per 1,000 aged under 18 yrs), 31 March 2016	5	7	10	3	3	3

Carers

Ref	Indicator	East Sussex	Eastbourne	Hastings	Lewes	Rother	Wealden
6.01	People providing one hour or more of unpaid care per week (%), 2011	11.3	10.6	10.5	11.8	12.4	11.2
6.02	Unpaid carers providing 20 hours or more care per week (%), 2011	33	37	40	30	35	29
6.03	Working age people claiming Carers Allowance (%), Feb 2016	1.5	1.7	2.1	1.3	1.7	1.1
6.04	Carers known to adult social care (per 1,000 population), Dec 2014 to Nov 2015	17	17	21	15	20	14
6.05	Carers (known to adult social care) receiving a service (%), Dec 2014 to Nov 2015	84	85	84	85	85	82
6.06	Carers receiving self-directed support (per 1,000 aged 18+), Dec 2014 to Nov 2015	8	8	11	7	10	7

Adult social care

Ref	Indicator	East Sussex	Eastbourne	Hastings	Lewes	Rother	Wealden
6.10	Requests for adult social care support (per 1,000 aged 18+), Dec 2014 to Nov 2015	25	27	28	24	30	21
6.11	Adults receiving direct payments (per 1,000), at 30 Jun 2016	4	3	5	3	4	3
6.12	Adults receiving self-directed support (per 1,000), at 30 Jun 2016	11	12	14	9	11	8
6.13	Working age people receiving Long Term Support (per 1,000), Jul 2015 to Jun 2016	8	9	12	5	9	5
6.14	People aged 65+ receiving Long Term Support (per 1,000), Jul 2015 to Jun 2016	30	35	39	30	27	26
6.15	Learning disabled adults aged 18-64 in settled accommodation (%), Jul 2015 to Jun 2016	72	74	74	82	62	71
6.16	Adults receiving community equipment (per 1,000), 2015/16	10	11	11	11	12	8
6.17	Adults receiving adult social care funded lifeline or telecare (per 1,000), 2015/16	12	14	12	11	13	10
6.18	People 65+ discharged from hosp to intermed care (per 1,000), Sep 2014 to Aug 2015	7	9	5	9	6	7
6.19	Adults in council supported residential or nursing care (per 100,000), at 30 June 2016	575	609	793	320	686	499
6.20	New ASC clients receiving services, not asking for more ongoing (%), Dec 14 to Nov 15	90	86	94	90	94	89

NHS dental services

Ref	Indicator	East Sussex	Eastbourne	Hastings	Lewes	Rother	Wealden
3.40	Residents aged 0-17 accessing East Sussex NHS general dental services (%), 2015/16	76	76	75	81	73	75
3.41	Residents aged 18-64 accessing East Sussex NHS general dental services (%), 2015/16	53	50	61	51	55	49
3.42	Residents aged 65+ accessing East Sussex NHS general dental services (%), 2015/16	53	47	62	50	58	50

GP patient survey

Ref	Indicator	East Sussex	Eastbourne	Hastings	Lewes	Rother	Wealden
5.01	Patients responding to the GP Patient Survey (%), 2015/16 (M)	48	46	39	50	54	54
5.02	Patients whose experience of their GP surgery was good (%), 2015/16 (M)	88	90	83	89	91	88
5.03	Patients whose experience of making appointments was good (%), 2015/16 (M)	77	78	72	77	88	73
5.04	Patients satisfied with GP surgery's opening hours (%), 2015/16 (M)	78	81	78	75	82	74
5.05	Patients who said the GP was good at involving them in decisions on care (%), 2015/16 (M)	77	79	71	79	78	78
5.06	Patients who said the nurse was good at involving them in decisions on care (%), 2015/16 (M)	65	65	69	62	65	66

Appendix 2: Acronyms and abbreviations

A&E	Accident and Emergency
ACS	Ambulatory Care Sensitive
AF	Atrial Fibrillation
ASC	Adult Social Care
BP	Blood Pressure
CAMHS	Child and Adolescent Mental Health Services
CCG	Clinical Commissioning Group
CHD	Coronary Heart Disease
CKD	Chronic Kidney Disease
COPD	Chronic Obstructive Pulmonary Disease
CV	Cardiovascular
CVD	Cardiovascular Disease
DM	Diabetes Mellitus (used for diabetes QOF clinical domain)
DNA	Did Not Attend
DSR	Directly Standardised Rate
DTaP/IPV/Hib	Diphtheria, tetanus, pertussis (whooping cough), polio and Haemophilus influenzae type b (also known as the 5 in 1 vaccine)
EHCP	Education, Health and Care Plan
EHS	Eastbourne, Hailsham and Seaford
ESA	Employment and Support Allowance
EYFS	Early Years Foundation Stage
Hib	Haemophilus influenzae type b
HIV	Human Immunodeficiency Virus
HR	Hastings and Rother
HWLH	High Weald Lewes Havens
ID	Income Deprivation
ID 2015	Indices of Deprivation, 2015
IDACI	Income Deprivation Affecting Children Index
IDAOPi	Income Deprivation Affecting Older People Index
IMD	Index of Multiple Deprivation
JSA	Job Seekers Allowance
LD	Learning Disability
LRTI	Lower Respiratory Tract Infection
LSOA	Lower Super Output Area
MenC	Meningococcal C conjugate
MH	Mental Health
MIU	Minor Injury Unit
MMR	Measles, mumps and rubella
MRC	Medical Research Council
NEET	Not in Education, Employment or Training
PAD	Peripheral Arterial Disease
PCV	Pneumococcal conjugate vaccine
PHOF	Public Health Outcomes Framework

PPV	Pneumococcal polysaccharide vaccine
QOF	Quality and Outcomes Framework
RAG	Red Amber Green
RCP	Royal College of Physicians
SAR	Standardised Attendance Ratio/ Standardised Admissions Ratio
SEN	Special Educational Needs
SMR	Standardised Mortality Ratio
STIs	Sexually Transmitted Infections
UC	Universal Credit