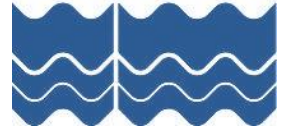




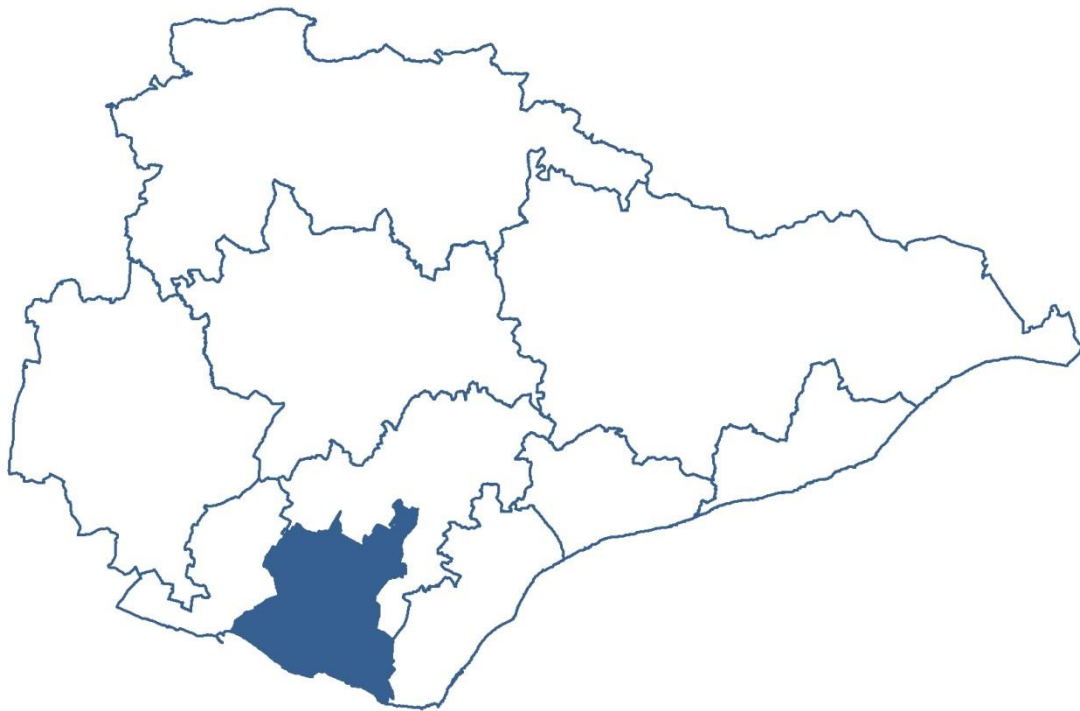
**Eastbourne, Hailsham and Seaford  
Clinical Commissioning Group**

**East Sussex  
County Council**



# Seaford Locality

**Based on the NHS view of the  
JSNAA Scorecards 2017  
East Sussex Public Health**



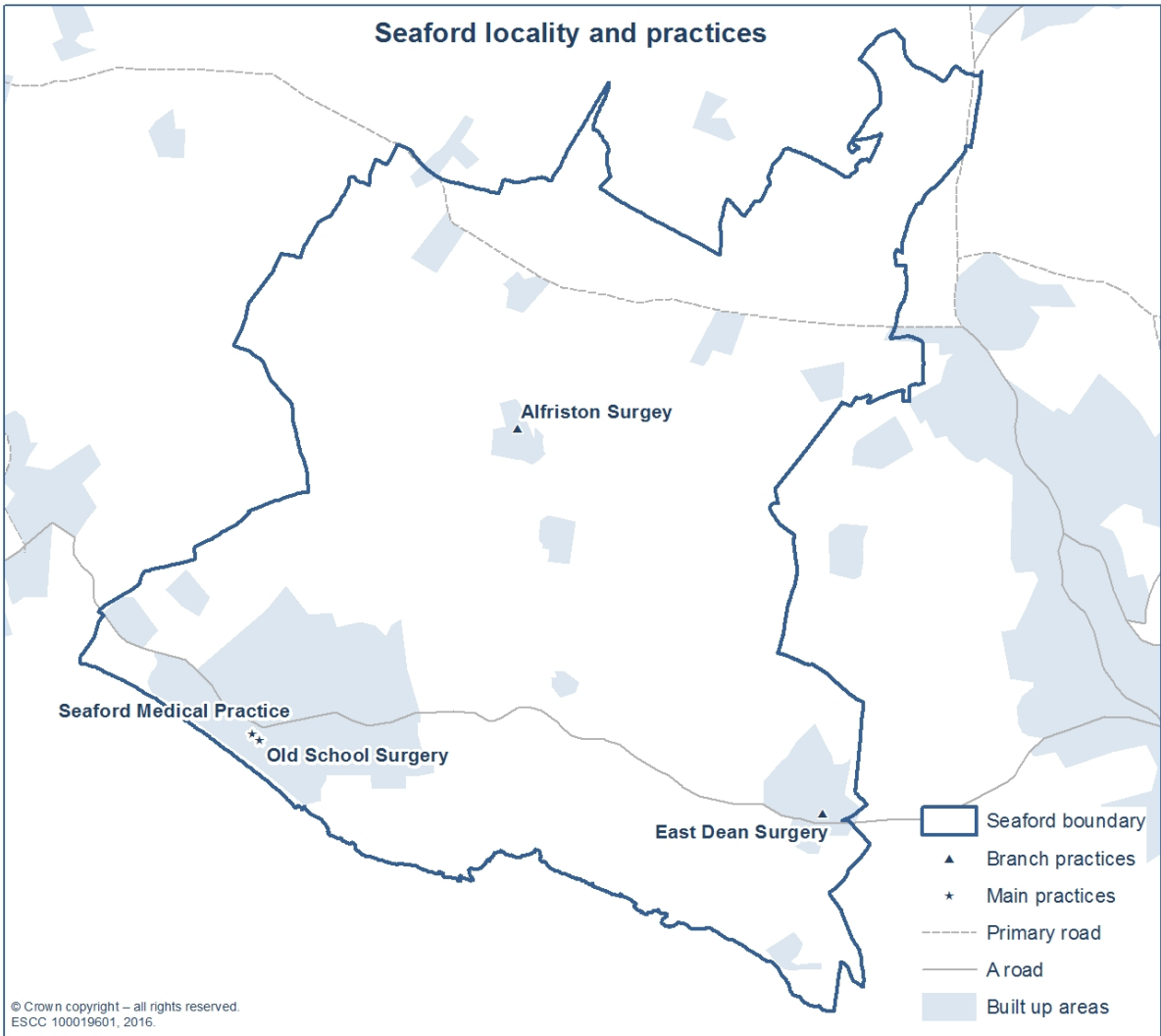
**East Sussex**

**Joint Strategic Needs & Assets Assessment**

[eastsussexjsna.org.uk](http://eastsussexjsna.org.uk)



### Seaford locality and practices



© Crown copyright – all rights reserved.  
ESCC 100019601, 2016.

# Table of Contents

<b>Key statistics .....</b>	<b>5</b>
<b>Introduction .....</b>	<b>6</b>
<b>Population.....</b>	<b>8</b>
<b>Wider determinants.....</b>	<b>10</b>
<b>Overall health status.....</b>	<b>11</b>
<b>Healthy lifestyles .....</b>	<b>11</b>
Pregnancy and infancy.....	11
Physical activity and excess weight.....	11
Smoking.....	11
Alcohol and drug misuse .....	11
Sexual health .....	11
Accidents and injuries .....	12
<b>Health protection.....</b>	<b>12</b>
<b>Disease and poor health.....</b>	<b>12</b>
Mental health and wellbeing.....	12
Circulatory.....	12
Cancer .....	12
Respiratory.....	13
Diabetes.....	13
Other chronic conditions.....	13
Avoidable admissions .....	13
Hospital admissions and attendances .....	13
<b>Social care .....</b>	<b>16</b>
Children's services .....	16

Carers.....	16
Adult social care.....	16
<b>NHS dental services.....</b>	<b>16</b>
<b>GP patient survey.....</b>	<b>16</b>
<b>Appendix 1: Scorecard Summary Tables .....</b>	<b>17</b>
<b>Appendix 2: Acronyms and abbreviations .....</b>	<b>26</b>

## Key statistics

Key Statistics for Seaford Locality			
Ref	Indicator	Number per year	Value
1.01	GP registered population (count), Oct 2015	27,767	
1.02	GP registered population aged 0-19 yrs (%), Oct 2015	4,801	17
1.03	GP registered population aged 20-64 yrs (%), Oct 2015	13,925	50
1.04	GP registered population aged 65+ yrs (%), Oct 2015	9,041	33
1.18	Live births per 1,000 women aged 15-44 yrs, 2014-15	203	55
2.02	Income Deprivation (as a percentage), from ID 2015 (M)		10
2.04	Children in low-income families (%), Aug 2014 (M)	515	14
3.06	Excess weight in 10-11 year olds (%), 2012/13-2014/15 (M)	58	30
3.09	GP reported prevalence of smoking aged 15+ (%), 2015/16	3,377	14
4.04	Life expectancy at birth (yrs), 2013-15		83.2
4.05	Life expectancy at age 75 (yrs), 2013-15		13.4
4.06	All-cause mortality (SMR), 2013-15	414	92
4.08	Mortality from causes considered preventable (SMR), 2014-15	44	78
4.15	GP reported prevalence of dementia (%), 2015/16	385	1.4
4.23	GP reported prevalence of hypertension (%), 2015/16	5,921	21.2
4.26	GP reported prevalence of CHD (%), 2015/16	1,389	5.0
4.29	GP reported prevalence of stroke or TIA (%), 2015/16	858	3.1
4.32	GP reported prevalence of atrial fibrillation (%), 2015/16	1,083	3.9
4.34	GP reported prevalence of heart failure (%), 2015/16	317	1.1
4.49	GP reported prevalence of asthma (%), 2015/16	1,906	6.8
4.52	GP reported prevalence of COPD (%), 2015/16	632	2.3
4.57	GP reported prevalence of diabetes aged 17+ (%), 2015/16	1,595	6.7
4.60	GP reported prevalence of epilepsy aged 18+ (%), 2015/16	174	0.7
4.62	GP reported prevalence of CKD aged 18+ (%), 2015/16	1,690	7.2
4.65	GP reported prevalence of learning disabilities aged 18+ (%), 2015/16	98	0.4
4.72	First outpatient attendances (SAR), 2015/16	12,393	108
4.74	All MIU and A&E attendances (SAR), 2015/16	7,349	92
4.78	All elective admissions (SAR), 2014/15 to 2015/16	5,057	102
4.80	All emergency admissions (SAR), 2014/15 to 2015/16	2,754	88
6.01	People providing one hour or more of unpaid care per week (%), 2011 (M)	3,328	12.5

Significantly worse than East Sussex	Significantly better than East Sussex
Significantly higher than East Sussex	Significantly lower than East Sussex
Not significantly different to East Sussex	Significance not tested

# Introduction

Seaford locality is one of three localities in Eastbourne, Hailsham & Seaford CCG. This narrative describes Seaford locality in the East Sussex context. It is based on 2017 JSNAA scorecard data, presented in the form of indicator tables (Appendix 1) in which East Sussex localities/communities of practice and CCGs are RAG-rated against East Sussex. Further tables and charts summarise key statistics and specific topics (such as hospital admission and attendance rates) for this locality.

For ease of reference, throughout the rest of this area summary the term 'localities' is used to refer to the 4 HWLH CCG communities of practice as well as the 3 localities in EHS CCG and the 3 localities in HR CCG.

The RAG-rated tables highlight statistically significant differences between Seaford locality and East Sussex. Individual JSNAA scorecards are referenced alongside the indicator titles; if data has been modelled from LA to NHS geographies indicator titles are flagged with (M). For indicators where locality or CCG data is not available, values for Lewes District (based on the LA view JSNAA scorecards and area summaries) are discussed.

For more in-depth information on how GP practices, as well as localities and CCGs, compare to East Sussex, this report should be read alongside the NHS view JSNAA indicator scorecards.

Here 'significance' refers to statistical significance at the 95% confidence level.

In the tables (Appendix 1) statistically significant differences between this locality and East Sussex are flagged in red/green and dark blue/light blue and the indicator values are given. But note that, for values based on large numbers, even small, possibly unimportant, differences can be statistically significant. Conversely, values based on small numbers can be substantially, but not (in statistical terms) significantly different to East Sussex.

Some rates are age and/or sex standardised. For those that are not, such as the GP-reported prevalence of diabetes and other chronic diseases, it is important to take into account the age profile of the population, as they are likely to be higher in areas with older age profiles.

NHS and LA view JSNAA scorecards and area summaries can be downloaded from [www.eastsussexjsna.org.uk/scorecards](http://www.eastsussexjsna.org.uk/scorecards).

The following products can also be downloaded from the East Sussex JSNAA website:

### **GP Practice Profiles and Locality/Community of Practice Profiles**

Spine charts are used to compare the GP practice or locality/community of practice to East Sussex for all available JSNAA indicators.

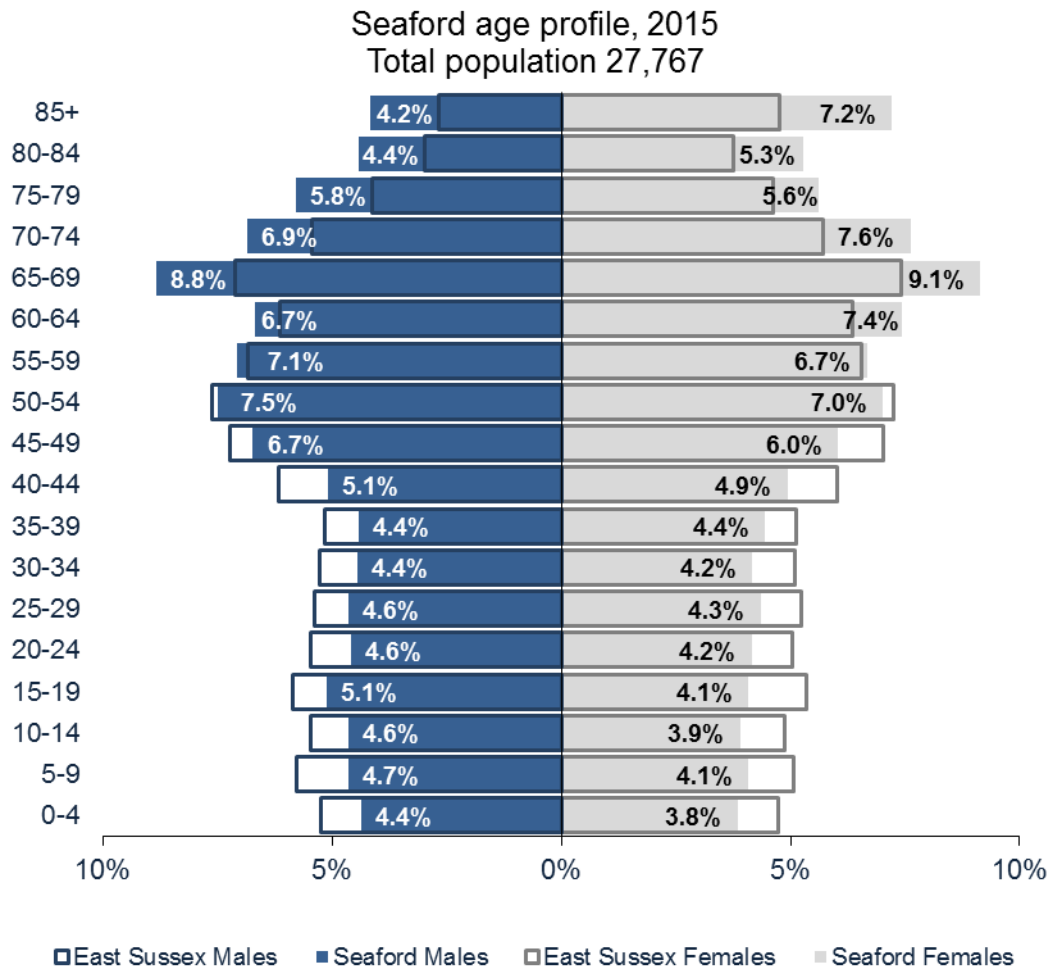
See <http://www.eastsussexjsna.org.uk/PracticeProfiles2017>

### **Local Needs and Assets Profiles**

East Sussex, its districts/boroughs and CCGs are compared to England. RAG-rated tables similar to those in Appendix 1 (but with England as the benchmark) are included.

See <http://www.eastsussexjsna.org.uk/overviews/localneedsprofile.aspx>

# Population



Seaford locality has one of the smallest populations of all East Sussex localities. It has a significantly lower percentage of people aged under 65 but a significantly higher percentage of people aged 65 years and over. It has a similar birth rate to East Sussex.

Table 1 shows the estimated population changes between 2015 and 2021 for specific age groups, as well as all ages. Using projections modelled from East Sussex districts and boroughs, the table shows that over the next 6 years some age groups are projected to increase in size whilst others will decrease in size. The net effect is that the population of the locality is estimated to increase, with the largest estimated increase in those aged 85 years and over.

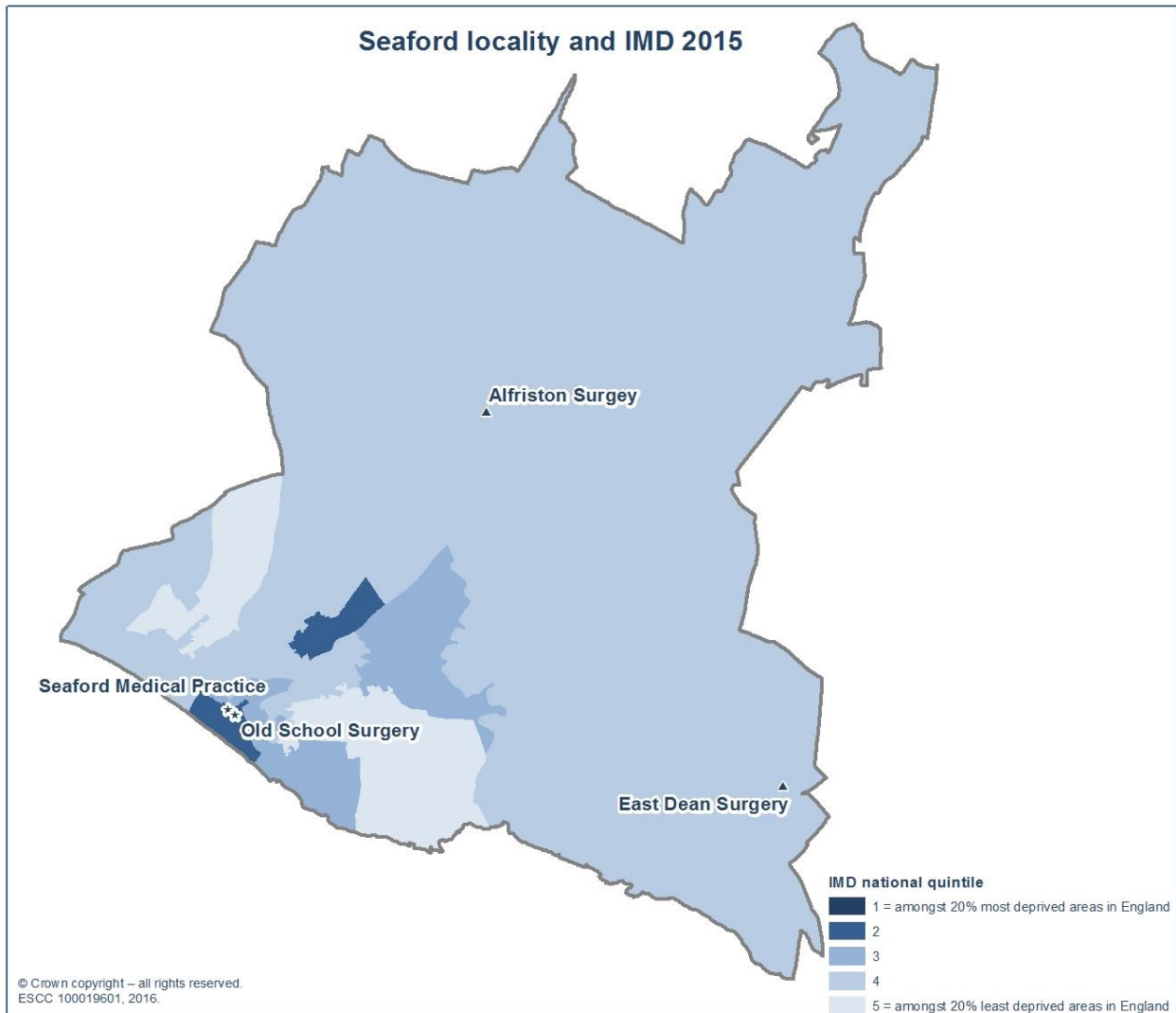


**Table 1: Population projections for all persons (number and percentage change) showing the increase (positive) or decrease (negative) from 2015 to 2021 (modelled)**

Population projections from 2015 to 2021						
Population Change	East Sussex		EHS CCG		Seaford Locality	
	Number	%	Number	%	Number	%
0-19 years	900	0.8%	100	0.3%	100	2.6%
20-64 years	-2,100	-0.7%	-1,200	-1.2%	-25	-0.1%
65+ years	14,600	11.0%	5,200	10.4%	1,050	11.7%
85+ years	3,200	15.8%	1,350	15.7%	350	21.5%
All Ages	13,500	2.6%	3,900	2%	950	3.4%

Seaford has one of the highest dependency ratios (of non-working age people compared to working age people) of all localities, and amongst the highest levels older people living alone. It also has significantly fewer non-white British people and children who speak English as an additional language than East Sussex.

## Wider determinants



Seaford has lower income deprivation, employment deprivation and fuel poverty than East Sussex. It is also significantly fewer working age people claiming ESA, JSA and UC, and fewer households are able to access a GP within 15 minutes by public transport/walking.

The locality has a significantly higher rate of children achieving the expected standard at Key Stage 2 and has a lower rate of working age people with no or low qualifications.

A significantly higher percentage of households are owned and a lower percentage rented than in East Sussex. A significantly lower percentage of households are overcrowded.

It has a significantly lower rate of recorded crimes and anti-social behaviour than East Sussex and similar hospital attendances due to assaults and admissions due to violence.

## Overall health status

Self-reported levels of ill health are similar but self-reported levels of LLTI or disability are significantly higher than for East Sussex; preventable mortality is lower.

## Healthy lifestyles

### Pregnancy and infancy

This locality has significantly higher rates of breastfeeding initiation and breastfeeding at 6-8 weeks than East Sussex.

### Physical activity and excess weight

It has significantly lower (and the lowest of all) levels of overweight or obese reception year children. Lewes District has similar levels of adults achieving 150 minutes physical activity per week, and of overweight or obese adults, to East Sussex.

### Smoking

It has significantly lower levels of mothers who are current smokers at the time of delivery. Lewes District has similar smoking-attributable mortality to East Sussex.

### Alcohol and drug misuse

This locality has lower rates of adults in drug treatment and Lewes District has lower alcohol-related hospital admissions than East Sussex.

### Sexual health

In Lewes district under 18s conceptions and chlamydia detection rates are similar or somewhat lower than in East Sussex. But the gonorrhoea detection rate is significantly higher and the highest of all the districts/boroughs.

## Accidents and injuries

A&E attendances for accidents and injuries in 0-4 year olds are significantly lower than for East Sussex, but the emergency admissions rate is similar. Emergency admissions for accidents and injuries for children aged 5-14 are significantly lower, but for 15-24 year olds they are higher. The emergency admissions rate for falls injuries in older people is similar to East Sussex. For Lewes District the rate of people killed or seriously injured on the roads is not significantly different to East Sussex.

## Health protection

Seaford is significantly better than East Sussex for eligible people receiving an NHS Health Check, uptake of cervical, breast and bowel cancer screening, child immunisations by age 1 (highest of all localities) and seasonal flu vaccination for persons aged 65 years or over.

## Disease and poor health

### Mental health and wellbeing

The incidence of depression is significantly lower in Seaford than East Sussex. The prevalence of severe mental illness, CAMHS caseload rate, and emergency admissions due to mental health and for persons with dementia are similar to East Sussex. The rate of working age people claiming ESA due to mental health problems is significantly lower. The prevalence of dementia (not age-standardised) is significantly higher and the second highest of all localities.

### Circulatory

Across different circulatory conditions Seaford has significantly higher prevalences (not age-standardised) than East Sussex. Emergency admissions and mortality for circulatory diseases are similar to East Sussex.

### Cancer

Premature mortality due to cancer is similar to East Sussex. EHS CCG has similar incidence and mortality to East Sussex for lung, colorectal, breast and prostate cancers.

## Respiratory

Seaford has a higher asthma prevalence than East Sussex but similar emergency admissions due to asthma. Emergency admissions due to COPD are significantly lower. Mortality from respiratory conditions is similar to East Sussex.

## Diabetes

Seaford has a significantly higher diabetes prevalence (not age-standardised) and emergency admissions for diabetes than East Sussex.

## Other chronic conditions

It has a significantly higher CKD prevalence (not age-standardised) than East Sussex.

## Avoidable admissions

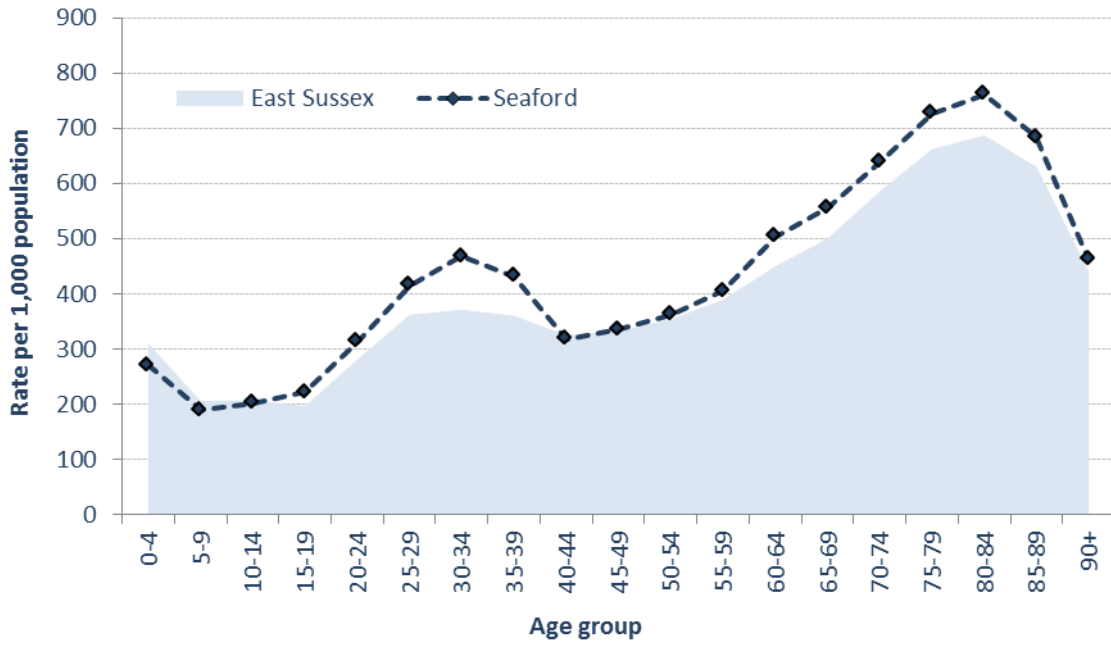
It has significantly lower emergency admissions for acute ACS conditions and other/vaccine preventable ACS conditions.

## Hospital admissions and attendances

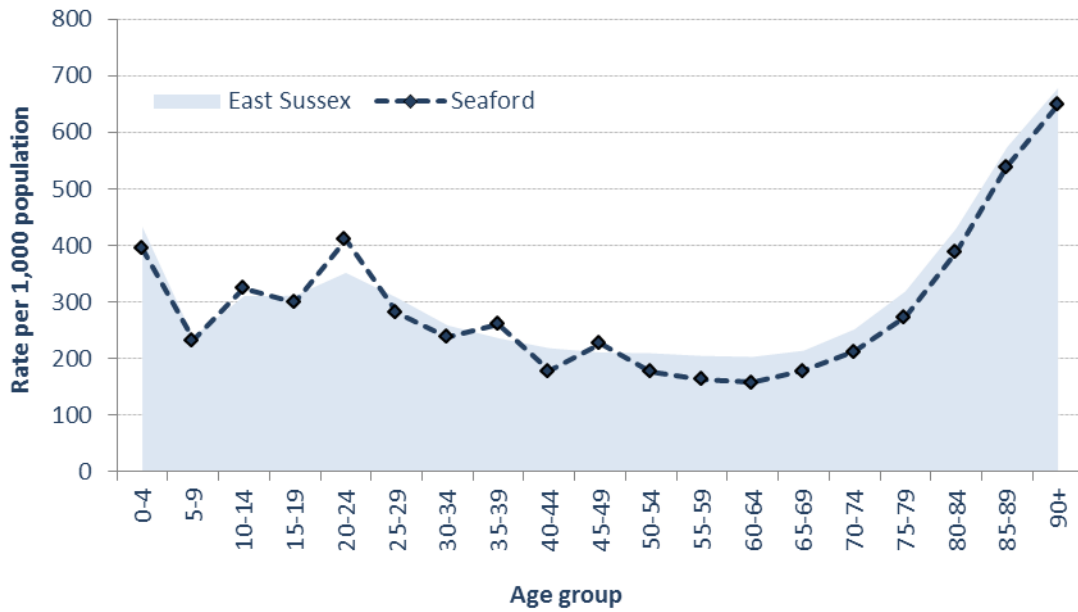
Compared to East Sussex Seaford has significantly higher outpatient attendances but lower outpatient DNAs. This locality is significantly lower for MIU/A&E attendances, higher for elective admissions and significantly lower for emergency admissions.

The following graphs present the age-specific overall attendance and admission rates for the locality compared to East Sussex.

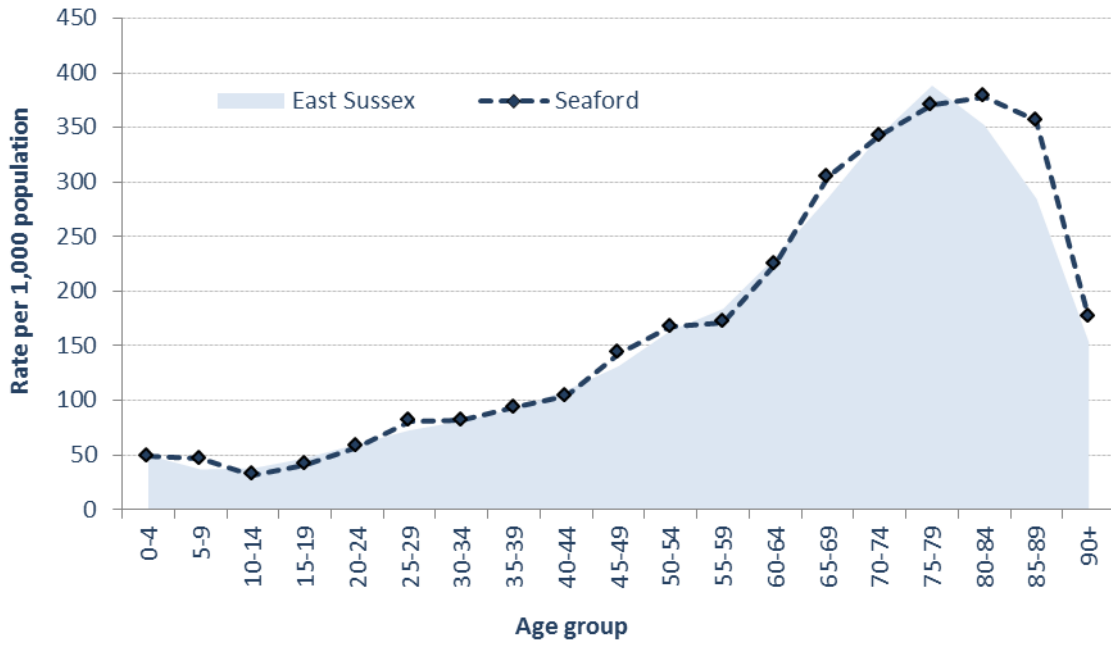
### Age-specific outpatient attendance rates



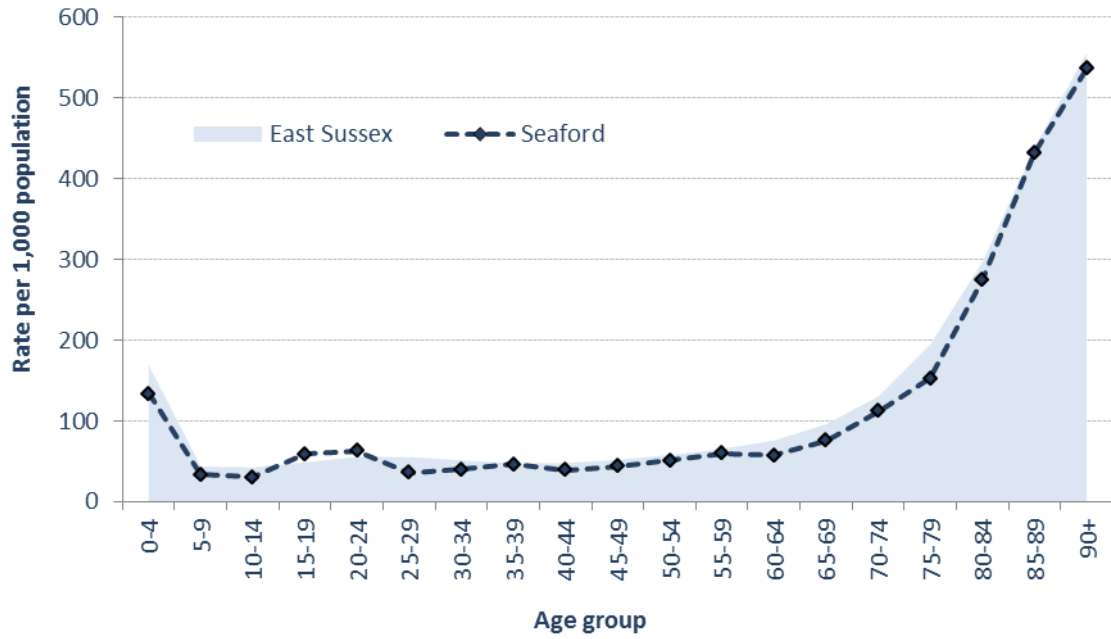
### Age-specific A&E/MIU attendance rates



### Age-specific elective admission rates



### Age-specific emergency admission rates



## Social care

### Children's services

Seaford is similar to East Sussex for looked after children and referrals to children's social care and is lower for children on a child protection plan.

### Carers

Compared to East Sussex Seaford is significantly higher for people providing one hour or more of unpaid care per week but significantly lower for unpaid carers providing 20 hours or more care per week and for working age people claiming Carers Allowance. Carers known to adult social care and those receiving a service or receiving self-directed support are all similar to East Sussex.

### Adult social care

Compared to East Sussex Seaford is significantly higher for requests for ASC support and slightly higher for adults receiving ASC funded lifeline or telecare. It is significantly lower for adults receiving direct payments.

## NHS dental services

Compared to East Sussex significantly higher percentages of children, but slightly lower percentages of adults, access East Sussex NHS general dental services.

## GP patient survey

The percentage of patients responding to the GP Patient Survey is significantly higher than in East Sussex. Significantly higher percentages of patients report a good experience of their surgery and that GPs involve them in decisions on care. Similar percentages to East Sussex are satisfied with opening hours, have a good experience of making an appointment and of nurses involving them in decisions on care.



# Appendix 1: Scorecard Summary Tables

Significantly worse than East Sussex	Significantly better than East Sussex	Significantly higher than East Sussex	Significantly lower than East Sussex	Not significantly different to East Sussex	Significance not tested
--------------------------------------	---------------------------------------	---------------------------------------	--------------------------------------	--	-------------------------

		Population													
Ref	Indicator	East Sussex	EHS CCG	H&R CCG	HWLH CCG	Eastbn.	Hailsham & Polegate	Seaford	Bexhill	Hastings & St Leonards	Rural Rother	Crowbr.	Havens	Lewes	Uckfield
1.11	Dependency ratio, Oct 2015	0.69	0.72	0.69	0.66	0.67	0.78	0.86	0.89	0.59	0.76	0.69	0.65	0.64	0.65
1.12	Lone older person (aged 65+) households (%), 2011 (M)	16	18	16	14	17	17	20	22	13	17	14	15	15	14
1.13	Lone parent households (%), 2011 (M)	6	6	7	6	7	6	5	5	8	5	5	7	6	5
1.14	Non-White British population (%), 2011 (M)	8	9	8	7	12	6	6	6	10	5	8	8	8	5
1.15	Non-White British pupils (%), 2016 (M)	12	15	12	10	18	10	10	12	14	7	9	12	11	8
1.16	Pupils with English as an additional language (per 1,000), 2016 (M)	57	80	55	31	108	36	33	57	68	15	27	48	28	25
1.18	Live births per 1,000 women aged 15-44 yrs, 2014-15	59	61	61	54	60	68	55	55	64	58	50	65	48	56
1.19	Live births per 1,000 women aged 15-19 yrs, 2014-15	13	15	17	7	18	13	8	15	21	7	5	16	3	8
1.20	Live births per 1,000 women aged 35-44 yrs, 2014-15	34	35	33	35	34	34	37	28	32	38	36	33	39	34

		Wider determinants - Economy, income and transport													
Ref	Indicator	East Sussex	EHS CCG	H&R CCG	HWLH CCG	Eastbn.	Hailsham & Polegate	Seaford	Bexhill	Hastings & St Leonards	Rural Rother	Crowbr.	Havens	Lewes	Uckfield
2.02	Income Deprivation (as a percentage), from ID 2015 (M)	13	13	18	9	14	12	10	15	22	11	6	15	9	7
2.04	Children in low-income families (%), Aug 2014 (M)	19	19	25	12	20	19	14	23	28	16	9	21	12	9
2.05	Income Deprivation Affecting Older People Index (IDAOPI) (as a percentage), from ID 2015 (M)	15	15	18	10	16	13	10	15	23	12	8	16	10	9
2.06	Households in fuel poverty (%), 2014 (M)	9	8	10	9	8	7	7	8	12	11	9	7	11	8
2.07	Pupils receiving the pupil premium (%), Jan 2016 (M)	21	20	27	14	22	19	17	24	30	19	9	24	14	11
2.08	Households with dependent children and no adults in employment (%), 2011 (M)	13	12	17	9	13	11	10	16	20	10	6	14	9	7
2.09	Employment Deprivation (as a percentage), from ID 2015 (M)	11	12	15	7	13	10	9	14	18	9	5	12	7	6
2.10	Working age people claiming JSA and Universal Credit (%), Aug 2016 (M)	1.4	1.4	1.8	0.8	1.6	1.1	1.0	1.6	2.2	0.8	0.4	1.5	0.8	0.5
2.11	Working age people claiming ESA (%), Aug 2016 (M)	6.2	6.3	8.3	3.9	6.9	5.5	5.1	7.6	9.8	4.7	2.6	6.6	3.7	3.4
2.12	Households with no cars or vans (%), 2011 (M)	22	24	26	15	27	18	20	24	32	14	9	22	18	11
2.13	Households able to access a GP practice in 15 min by public transport/walking (%), 2014 (M)	78	81	86	65	84	84	66	91	90	69	60	83	67	53

**Wider determinants - Education**

Ref	Indicator	Wider determinants - Education				Hailsham & Polegate			Hastings & St Leonards			Rural Rother			
		East Sussex	EHS CCG	H&R CCG	HWLH CCG	Eastbn.	Polegate	Seaford	Bexhill	Leonards	Rural Rother	Crowbr.	Havens	Lewes	Uckfield
2.16	Pupils (at age 5) reaching a good level of development in the EYFS (%), Jun 2016 (M)	75	75	75	76	74	77	77	75	75	74	74	69	80	80
2.17	Pupils (at age 11) achieving the expected standard at Key Stage 2, Jun 2016 (M)	50	52	49	49	51	51	58	47	50	46	49	54	48	48
2.18	Average GCSE Attainment 8 score for pupils (at age 16) at Key Stage 4, Jun 2016 (M)	49	49	47	52	49	48	52	47	46	50	54	47	53	53
2.19	Working age population with no or low qualifications (%), 2011 (M)	30	30	34	27	30	32	29	33	36	30	23	36	23	27
2.20	Pupils with special educational needs (SEN) on SEN Support (per 100,000), Jan 2016 (M)	90	82	98	88	82	86	77	96	103	87	73	109	100	76
2.21	Pupils with a statement of SEN or an EHCP (per 100,000), Jan 2016 (M)	36	34	40	33	34	34	37	40	41	36	28	39	31	34
2.22	Young people aged 16-18 yrs NEET (monthly rate per 1,000), Nov 2015 to Jan 2016 (M)	32	35	35	24	40	32	22	23	42	30	16	48	20	22

**Wider determinants - Housing**

Ref	Indicator	Wider determinants - Housing				Hailsham & Polegate			Hastings & St Leonards			Rural Rother			
		East Sussex	EHS CCG	H&R CCG	HWLH CCG	Eastbn.	Polegate	Seaford	Bexhill	Leonards	Rural Rother	Crowbr.	Havens	Lewes	Uckfield
2.25	Households that are overcrowded (%), 2011 (M)	7	8	7	5	9	5	5	6	9	4	4	7	5	4
2.26	Households with no central heating (%), 2011 (M)	2.8	2.5	3.7	2.2	2.8	2.1	1.8	2.4	4.5	3.4	1.9	2.5	2.6	2.0
2.27	Households owned outright or with a mortgage/loan (%), 2011 (M)	69	69	64	75	64	77	78	72	57	74	78	72	69	78
2.28	Socially rented households (%), 2011 (M)	11	11	12	10	12	10	7	9	14	12	8	10	14	8
2.29	Privately rented households (%), 2011 (M)	18	18	22	13	22	11	13	17	28	12	11	16	14	12
2.30	Persons living in care homes with nursing (%), 2011 (M)	0.5	0.5	0.6	0.3	0.4	0.5	0.6	1.1	0.4	0.3	0.3	0.2	0.3	0.5
2.31	Persons living in care homes without nursing (%), 2011 (M)	0.8	0.9	1.0	0.6	0.9	0.8	1.0	1.3	1.0	0.8	0.7	0.5	0.5	0.6

**Wider determinants - Crime**

Ref	Indicator	Wider determinants - Crime				Hailsham & Polegate			Hastings & St Leonards			Rural Rother			
		East Sussex	EHS CCG	H&R CCG	HWLH CCG	Eastbn.	Polegate	Seaford	Bexhill	Leonards	Rural Rother	Crowbr.	Havens	Lewes	Uckfield
2.33	Recorded crimes (per 1,000 population), 2015/16 (M)	51	51	64	36	60	39	36	48	82	38	28	50	42	28
2.34	Recorded incidents of Anti-Social Behaviour (per 1,000 population), 2015/16 (M)	24	25	31	17	30	17	18	25	40	15	12	25	20	12
2.35	A&E attendances by 15-59 yr olds for assaults, 8pm-4am (per 1,000), 2013/14 to 2015/16	1.4	1.7	1.6	1.0	2.1	1.1	1.2	1.3	1.8	1.1	0.7	2.1	0.7	0.8
2.36	Emergency admissions for violence (SAR), 2013/14 to 2015/16	100	85	138	74	94	68	75	89	179	77	78	130	53	44

Overall health status															
Ref	Indicator	East Sussex	EHS CCG	H&R CCG	HWLH CCG	Eastbn.	Hailsham & Polegate	Seaford	Bexhill	Hastings & St Leonards	Rural Rother	Crowbr.	Havens	Lewes	Uckfield
4.01	People reporting that their health is bad or very bad (%), 2011 (M)	6	6	7	4	6	6	6	8	7	5	4	7	4	4
4.02	People reporting a limiting long-term health problem or disability (%), 2011 (M)	20	21	23	16	21	21	23	27	22	20	15	21	16	16
4.04	Life expectancy at birth (yrs), 2013-15	82.3	82.3	81.3	83.6	82.1	82.3	83.2	81.2	80.4	83.4	84.9	81.8	84.8	82.6
4.05	Life expectancy at age 75 (yrs), 2013-15	12.9	13.0	12.5	13.2	12.8	13.1	13.4	12.4	12.0	13.5	14.1	13.0	14.5	11.7
4.07	Premature all-cause mortality (SMR), 2013-15	100	102	113	82	105	106	90	112	129	83	72	117	71	80
4.08	Mortality from causes considered preventable (SMR), 2014-15	100	100	117	80	101	113	78	116	131	89	64	125	69	79

Healthy Lifestyles - Pregnancy and infancy															
Ref	Indicator	East Sussex	EHS CCG	H&R CCG	HWLH CCG	Eastbn.	Hailsham & Polegate	Seaford	Bexhill	Hastings & St Leonards	Rural Rother	Crowbr.	Havens	Lewes	Uckfield
3.01	Low birth weight (%), 2014-15	6	6	6	5	7	5	5	7	7	5	5	6	6	4
3.02	Breastfeeding initiation (%), 2014/15	79	79	73	85	78	78	88	72	71	80	87	79	89	87
3.03	Breastfeeding prevalence at 6-8 weeks after birth (%), 2015/16 (M)	52	51	46	61	50	48	65	46	43	57	66	48	72	59
4.09	Infant mortality (per 1,000 live births), 2014-15	3.5	4.1	3.4	3.0	6.0				4.1				8.4	

Healthy Lifestyles - Physical activity and excess weight															
Ref	Indicator	East Sussex	EHS CCG	H&R CCG	HWLH CCG	Eastbn.	Hailsham & Polegate	Seaford	Bexhill	Hastings & St Leonards	Rural Rother	Crowbr.	Havens	Lewes	Uckfield
3.04	Adults achieving 150+ minutes physical activity per week (%), 2015	59													
3.05	Excess weight in 4-5 year olds (%), 2012/13-2014/15 (M)	21	21	23	19	22	20	17	21	24	20	17	23	19	19
3.06	Excess weight in 10-11 year olds (%), 2012/13-2014/15 (M)	30	32	33	26	33	30	30	35	33	30	23	32	21	27
3.07	Excess weight in Adults (%), 2012/13-2014/15	64.5													

Healthy Lifestyles - Smoking															
Ref	Indicator	East Sussex	EHS CCG	H&R CCG	HWLH CCG	Eastbn.	Hailsham & Polegate	Seaford	Bexhill	Hastings & St Leonards	Rural Rother	Crowbr.	Havens	Lewes	Uckfield
3.09	GP reported prevalence of smoking aged 15+ (%), 2015/16	17	16	21	15	17	14	14	17	25	15	13	21	15	14
3.10	Smoking quitters at 4 weeks (per 100,000 aged 16+yrs), 2015/16	390	351	478	337	387	256	363	440	566	309	145	809	278	279
3.11	Mothers known to be smokers at the time of delivery (%), 2014/15	14	13	21	6	15	12	6	18	24	12	5	9	6	5
3.12	Smoking-attributable deaths in persons aged 35+ yrs (DSR per 100,000), 2012-2014	246													

Healthy Lifestyles - Alcohol and drug misuse																
Ref	Indicator	East Sussex	EHS CCG	H&R CCG	HWLH CCG	Eastbn.	Hailsham & Polegate	Seaford	Bexhill	Hastings & St Leonards	Rural Rother	Crowbr.	Havens	Lewes	Uckfield	
3.13	Young people in drug or alcohol treatment (per 10,000 aged 0-18 yrs), Sep 14 to Aug 16 (M)	16	20	19	10	22	18	15	14	25	8	4	19	12	7	
3.14	Adults aged 19+ in alcohol treatment (per 100,000), 2015/16 (M)	20	21	25	15	23	18	16	17	33	13	11	16	15	17	
3.15	Alcohol-related admissions (DSR per 100,000), 2014/15	571	597	671	438											
3.16	Alcohol-related mortality (DSR per 100,000), 2014	42	40	50	36											
3.17	Adults aged 19+ in drug treatment (per 100,000), 2015/16 (M)	38	41	53	16	52	23	24	25	82	18	8	30	22	11	

Healthy Lifestyles - Sexual health																
Ref	Indicator	East Sussex	EHS CCG	H&R CCG	HWLH CCG	Eastbn.	Hailsham & Polegate	Seaford	Bexhill	Hastings & St Leonards	Rural Rother	Crowbr.	Havens	Lewes	Uckfield	
3.30	Under 18s conceptions (per 1,000 females aged 15-17), 2014	20														
3.31	Chlamydia detection rate in persons aged 15-24 (per 100,000), 2015	1,616	1,677	1,800	1,342											
3.32	Chlamydia detection rate in persons aged 25+ (per 100,000), 2015	89	85	109	72											
3.33	Gonorrhoea diagnostic rate (per 100,000), 2015	30	30	23	37											

Healthy Lifestyles - Accidents and injuries																
Ref	Indicator	East Sussex	EHS CCG	H&R CCG	HWLH CCG	Eastbn.	Hailsham & Polegate	Seaford	Bexhill	Hastings & St Leonards	Rural Rother	Crowbr.	Havens	Lewes	Uckfield	
3.34	A&E attendances for accidents & injuries in 0-4 yr olds (per 10,000), 2015/16	1,326	1,427	1,621	860	1,534	1,402	906	1,701	1,708	1,228	555	1,261	894	827	
3.35	Emergency admissions for accidents & injuries in 0-4 yr olds (per 10,000), 2013/14 to 2015/16	168	165	219	113	170	155	164	208	231	193	124	109	109	105	
3.36	Emergency admissions for accidents & injuries in 5-14 yr olds (per 10,000), 2013/14 to 2015/16	91	72	97	106	71	81	57	84	97	111	102	108	133	84	
3.37	Emergency admissions for accidents and injuries in 15-24 yr olds (per 10,000), 2013/14 to 15/16	133	117	148	135	116	99	163	126	157	146	147	160	118	117	
3.38	Emergency admissions for falls injuries for people aged 65+ (SAR), 2014/15 to 2015/16	100	103	98	98	105	100	103	97	105	87	111	99	78	96	
3.39	People killed or seriously injured on East Sussex roads (per 100,000), 2012 to 2014	64														

Health protection - Health checks and screening																
Ref	Indicator	East Sussex	EHS CCG	H&R CCG	HWLH CCG	Eastbn.	Hailsham & Polegate	Seaford	Bexhill	Hastings & St Leonards	Rural Rother	Crowbr.	Havens	Lewes	Uckfield	
3.18	Eligible people aged 40-74 who received an NHS Health Check (%), Apr 2013 to Mar 2016	33	34	37	27	36	29	37	47	38	26	30	29	18	29	
3.19	Eligible women aged 25-64 screened for cervical cancer (%), at Mar 2015	75	75	75	76	74	79	77	75	74	77	74	77	78	77	
3.20	Eligible women aged 50-70 screened for breast cancer (%), at Mar 2015	74	74	72	76	71	76	78	75	70	73	73	78	77	75	
3.21	Eligible people aged 60-69 screened for bowel cancer (%), at Mar 2016	60	60	59	62	58	61	64	64	55	63	62	58	62	63	

### Health protection - Immunisation

Ref	Indicator	Health protection - Immunisation													
		East Sussex	EHS CCG	H&R CCG	HWLH CCG	Hailsham & Polegate			Hastings & St Leonards			Rural Rother	Crowbr.	Havens	Lewes
3.22	Children immunised for DTaP/IPV/Hib by age 1 (%), 2015/16	94	96	93	93	96	94	99	93	92	93	90	97	90	97
3.23	Children immunised for pneumococcal infection by age 2 (%), Apr 2015 to Dec 2016	93	93	92	93	94	88	95	94	92	90	91	96	90	94
3.24	Children immunised for Hib/MenC by age 2 (%), 2015/16	93	93	93	92	95	88	96	94	92	93	89	95	90	94
3.25	Children immunised for measles, mumps and rubella (MMR) by age 2 (%), 2015/16	93	92	94	91	93	88	95	94	94	93	87	95	90	94
3.26	Children immunised for DTaP/IPV/Hib by age 5 (%), 2015/16	89	90	88	90	89	92	91	93	86	88	85	94	87	95
3.27	Children immunised for measles, mumps and rubella (MMR) by age 5 (%), 2015/16	89	91	88	89	90	92	92	93	86	88	85	93	86	93
3.28	People aged 65+ receiving seasonal flu vaccination (%), Sep 2015 to Jan 2016	70	72	71	66	72	70	73	76	66	70	64	68	66	65
3.29	People aged 65+ ever receiving a pneumococcal vaccination (%), at 31 Mar 2016	69	67	72	65	68	65	69	78	69	70	64	74	61	64

### Disease and poor health - Mental health

Ref	Indicator	Disease and poor health - Mental health													
		East Sussex	EHS CCG	H&R CCG	HWLH CCG	Hailsham & Polegate			Hastings & St Leonards			Rural Rother	Crowbr.	Havens	Lewes
4.10	GP reported incidence of depression in persons aged 18+ (%), 2015/16	10.4	11.4	10.4	9.2	12.3	10.6	8.9	10.8	11.3	7.9	8.9	11.5	8.3	8.7
4.11	GP reported prevalence of severe mental illness (%), 2015/16 (M)	1.1	1.1	1.3	0.9	1.1	0.9	1.1	1.3	1.5	0.7	0.8	1.1	1.0	0.7
4.12	Emergency admissions for mental and behavioural disorders (SAR), 2014/15 to 2015/16	100	102	120	75	109	88	96	112	144	75	53	109	89	65
4.13	Emergency admissions, people with severe mental illness (SAR), 2014/15 & 2015/16	100	93	126	79	91	105	79	104	164	62	53	143	80	63
4.14	Emergency admissions relating to self-harm (SAR), 2014/15 to 2015/16	100	92	125	82	91	88	103	105	146	88	61	149	65	71
4.15	GP reported prevalence of dementia (%), 2015/16	1.1	1.2	1.0	0.9	1.2	1.2	1.4	1.7	0.8	0.7	0.9	0.9	0.7	1.0
4.16	GP reported versus expected prevalence of dementia at age 65+ (ratio), 2014/15	61	64	60	59										
4.18	Emergency admissions, people with dementia (SAR), 2014/15 & 2015/16	100	103	104	90	103	101	105	101	128	70	83	114	76	94
4.19	CAMHS caseload (per 1,000 aged 0-18 yrs), Mar 2016	19	18	22	17	17	19	17	24	22	19	14	23	17	16
4.20	Working age people claiming ESA for mental health problems (per 1,000), Feb 2016 (M)	29	30	40	18	33	24	23	36	49	19	12	31	18	15
4.22	Mortality from suicide (SMR), 2012-15	100	107	102	90	94	139	109	77	128	63	104	125	41	89

Disease and poor health - Circulatory															
Ref	Indicator	East Sussex	EHS CCG	H&R CCG	HWLH CCG	Eastbn.	Hailsham & Polegate	Seaford	Bexhill	Hastings & St Leonards	Rural Rother	Crowbr.	Havens	Lewes	Uckfield
4.23	GP reported prevalence of hypertension (%), 2015/16	16.7	17.5	17.5	14.9	16.0	18.9	21.2	22.2	14.9	18.5	15.5	15.9	13.0	14.8
4.24	GP reported versus expected prevalence of hypertension (ratio), 2014/15	61	62	61	58	60	63	64	65	59	61	60	61	55	58
4.25	GP reported prevalence of high blood pressure without established CVD (%), 2015/16	1.3	1.2	1.3	1.3	1.2	1.6	0.7	1.6	1.2	1.2	1.4	1.1	1.1	1.5
4.26	GP reported prevalence of CHD (%), 2015/16	3.8	4.1	4.0	3.1	3.8	4.5	5.0	5.5	3.4	3.9	2.9	3.9	2.8	3.0
4.27	Emergency admissions for CHD (SAR), 2014/15 to 2015/16	100	103	108	86	105	99	102	108	118	92	55	146	90	80
4.28	Emergency admissions for CHD per 1,000 on GP CHD registers, 2015/16	55	50	60	55	49	49	55	54	66	59	38	77	57	52
4.29	GP reported prevalence of stroke or TIA (%), 2015/16	2.3	2.5	2.4	2.0	2.3	2.6	3.1	3.4	2.1	2.3	2.2	2.2	1.8	1.9
4.30	Emergency admissions for stroke (SAR), 2014/15 to 2015/16	100	105	99	95	102	104	117	92	109	91	83	119	96	93
4.31	Mortality from stroke (SMR), 2012-15	100	97	102	101	94	108	92	103	105	93	92	124	84	112
4.32	GP reported prevalence of atrial fibrillation (%), 2015/16	2.7	3.0	2.6	2.3	2.8	3.1	3.9	3.8	1.9	2.9	2.4	2.2	2.2	2.3
4.33	GP reported versus expected prevalence of atrial fibrillation (ratio), 2014/15	72	78	70	68	77	78	80	74	64	72	71	68	66	67
4.34	GP reported prevalence of heart failure (%), 2015/16	1.0	1.1	1.0	0.7	1.0	1.4	1.1	1.4	0.9	0.8	0.7	0.9	0.7	0.7
4.36	Premature mortality from circulatory diseases (SMR), 2012-15	100	104	117	76	105	104	99	110	136	86	71	126	66	57

Disease and poor health - Cancer															
Ref	Indicator	East Sussex	EHS CCG	H&R CCG	HWLH CCG	Eastbn.	Hailsham & Polegate	Seaford	Bexhill	Hastings & St Leonards	Rural Rother	Crowbr.	Havens	Lewes	Uckfield
4.38	Incidence of all cancers (DSR per 100,000), 2012-2014	584	576	593	587										
4.39	Incidence of lung cancer (DSR per 100,000), 2012-2014	64	61	73	57										
4.40	Mortality from lung cancer (DSR per 100,000), 2012-14	51	49	57	45										
4.41	Incidence of colorectal cancer (DSR per 100,000), 2012-2014	71	69	73	71										
4.42	Mortality from colorectal cancer (DSR per 100,000), 2012-14	28	26	29	30										
4.43	Incidence of breast cancer (DSR per 100,000 women), 2012-2014	172	162	172	184										
4.44	Mortality from breast cancer (DSR per 100,000 women), 2012-14	40	37	42	40										
4.45	Incidence of prostate cancer (DSR per 100,000 men), 2012-2014	178	170	171	196										
4.46	Mortality from prostate cancer (DSR per 100,000 men), 2012-14	46	44	45	48										
4.47	Mortality from all cancers (DSR per 100,000), 2012-14	271	274	280	259										
4.48	Premature mortality from cancer (SMR), 2012-15	100	103	105	91	109	101	86	108	112	88	77	126	80	95

Disease and poor health - Respiratory																
Ref	Indicator	East Sussex	EHS CCG	H&R CCG	HWLH CCG	Eastbn.	Hailsham & Polegate	Seaford	Bexhill	Hastings & St Leonards	Rural Rother	Crowbr.	Havens	Lewes	Uckfield	
4.49	GP reported prevalence of asthma (%), 2015/16	6.2	6.6	6.0	5.9	6.4	7.0	6.8	6.7	5.6	6.0	5.5	7.0	5.6	5.7	
4.50	Emergency admissions for asthma (SAR), 2014/15 to 2015/16	100	110	124	62	122	91	94	126	145	67	66	72	57	53	
4.51	Emergency admissions for asthma per 1,000 on GP asthma registers, 2015/16	14	14	19	9	17	10	9	14	26	10	10	11	10	6	
4.52	GP reported prevalence of COPD (%), 2015/16	2.1	2.3	2.5	1.7	2.2	2.5	2.3	2.7	2.6	1.9	1.7	2.4	1.3	1.5	
4.53	Emergency admissions for COPD (SAR), 2014/15 to 2015/16	100	91	127	79	90	104	75	117	161	78	72	130	57	69	
4.54	Emergency admissions for COPD per 1,000 on GP COPD registers, 2015/16	78	73	87	70	64	87	79	90	92	63	66	86	69	56	
4.55	Mortality from COPD (SMR), 2012-15	100	92	118	90	97	92	76	102	140	104	77	145	72	81	
4.56	Premature mortality from respiratory diseases (SMR), 2012-15	100	96	129	70	103	95	77	112	165	80	70	111	67	46	

Disease and poor health - Diabetes																
Ref	Indicator	East Sussex	EHS CCG	H&R CCG	HWLH CCG	Eastbn.	Hailsham & Polegate	Seaford	Bexhill	Hastings & St Leonards	Rural Rother	Crowbr.	Havens	Lewes	Uckfield	
4.57	GP reported prevalence of diabetes aged 17+ (%), 2015/16	6.3	6.4	6.9	5.5	6.1	7.0	6.7	7.8	6.6	6.5	5.0	7.4	4.6	5.2	
4.58	Emergency admissions for diabetes (SAR), 2014/15 to 2015/16	100	115	101	81	120	85	145	82	122	75	57	113	105	67	
4.59	Emergency admissions for diabetes per 1,000 on GP diabetes registers, 2015/16	13	16	11	13	17	13	17	9	15	6	8	16	19	9	

Disease and poor health - Other conditions																
Ref	Indicator	East Sussex	EHS CCG	H&R CCG	HWLH CCG	Eastbn.	Hailsham & Polegate	Seaford	Bexhill	Hastings & St Leonards	Rural Rother	Crowbr.	Havens	Lewes	Uckfield	
4.60	GP reported prevalence of epilepsy aged 18+ (%), 2015/16	0.8	0.8	0.9	0.7	0.8	0.8	0.7	1.0	1.0	0.7	0.7	0.8	0.7	0.7	
4.61	Premature mortality from liver disease (SMR), 2012-15	100	88	130	79	79	101	99	111	170	67	53	153	33	102	
4.62	GP reported prevalence of CKD aged 18+ (%), 2015/16	5.1	6.4	4.2	4.6	5.9	7.1	7.2	5.2	3.6	4.4	4.2	5.9	4.4	4.1	
4.65	GP reported prevalence of learning disabilities aged 18+ (%), 2015/16	0.5	0.5	0.6	0.5	0.5	0.4	0.4	0.6	0.7	0.5	0.4	0.4	0.3	0.6	

Disease and poor health - Avoidable admissions																
Ref	Indicator	East Sussex	EHS CCG	H&R CCG	HWLH CCG	Eastbn.	Hailsham & Polegate	Seaford	Bexhill	Hastings & St Leonards	Rural Rother	Crowbr.	Havens	Lewes	Uckfield	
4.67	Emergency admissions for LRTIs in under 20s (SAR), 2014/15 to 2015/16	100	106	95	98	103	98	139	78	104	84	56	162	125	68	
4.68	Emergency admissions for diabetes, epilepsy, asthma in under 20s (SAR), 2014/15 to 2015/16	100	118	117	62	134	80	114	115	131	82	69	47	69	58	
4.69	Emergency admissions for chronic ACS conditions (SAR), 2014/15 to 2015/16	100	101	118	77	104	99	94	106	144	81	64	111	75	73	
4.70	Emergency admissions for acute ACS conditions (SAR), 2014/15 to 2015/16	100	110	104	82	120	100	86	97	120	79	73	104	72	86	
4.71	Emergency admissions for other & vaccine preventable ACS conditions (SAR), 2014/15 to 2015/16	100	97	105	99	103	92	83	89	128	83	65	146	108	101	

**Disease and poor health - Hospital attendances and admissions**

Ref	Indicator	Disease and poor health - Hospital attendances and admissions													
		East Sussex	EHS CCG	H&R CCG	HWLH CCG	Hailsham & Polegate			Hastings & St Leonards			Rural Rother	Crowbr.	Havens	Lewes
4.72	First outpatient attendances (SAR), 2015/16	100	99	103	98	96	99	108	101	109	93	101	114	89	90
4.73	Outpatient appointments where the patient did not attend (%), 2015/16	7	7	8	6	8	7	6	7	9	7	5	9	7	6
4.74	All MIU and A&E attendances (SAR), 2015/16	100	95	95	111	96	94	92	86	107	77	109	123	114	103
4.75	MIU and A&E attendances for 0-4 yr olds (per 1,000), 2015/16	433	392	411	509	396	383	395	404	438	326	445	611	566	441
4.76	MIU and A&E attendances for persons aged 15-29 (per 1,000), 2015/16	324	310	315	351	317	282	330	282	344	261	359	366	343	336
4.77	MIU and A&E attendances for persons aged 70+ (per 1,000), 2015/16	384	379	352	431	385	384	354	344	403	278	415	490	473	374
4.78	All elective admissions (SAR), 2014/15 to 2015/16	100	108	99	91	108	114	102	100	102	92	84	107	89	92
4.79	Elective admissions for persons aged 65+ (SAR), 2014/15 to 2015/16	318	352	304	290	355	361	332	300	309	299	272	329	285	291
4.80	All emergency admissions (SAR), 2014/15 to 2015/16	100	100	111	86	104	98	88	104	126	90	78	110	80	84
4.81	Emergency admissions for persons aged 70-84 yrs (SAR), 2014/15 to 2015/16	194	196	204	180	206	194	170	198	233	161	163	232	164	177
4.82	Emergency admissions for persons aged 85+ (SAR), 2014/15 to 2015/16	485	489	496	464	492	492	474	486	532	455	452	520	479	426

**Children's services**

Ref	Indicator	Children's services													
		East Sussex	EHS CCG	H&R CCG	HWLH CCG	Hailsham & Polegate			Hastings & St Leonards			Rural Rother	Crowbr.	Havens	Lewes
6.07	Referrals to children's social care (per 1,000 aged under 18 yrs), Feb 2015 to Jan 2016 (M)	30	32	37	20	32	34	27	34	45	18	12	47	15	15
6.08	Children on a child protection plan (per 1,000 aged under 18 yrs), 31 March 2016 (M)	4	4	7	2	4	4	1	6	9	1	2	4	2	1
6.09	Looked after children (per 1,000 aged under 18 yrs), 31 March 2016 (M)	5	5	7	3	7	3	3	4	9	3	2	4	2	3

**Carers**

Ref	Indicator	Carers													
		East Sussex	EHS CCG	H&R CCG	HWLH CCG	Hailsham & Polegate			Hastings & St Leonards			Rural Rother	Crowbr.	Havens	Lewes
6.01	People providing one hour or more of unpaid care per week (%), 2011 (M)	11.3	11.3	11.5	11.0	10.9	11.6	12.5	12.7	10.7	12.0	10.5	11.6	11.7	10.7
6.02	Unpaid carers providing 20 hours or more care per week (%), 2011 (M)	34	35	37	28	36	35	29	38	39	32	25	38	25	27
6.03	Working age people claiming Carers Allowance (%), Feb 2016 (M)	1.5	1.6	1.9	1.1	1.6	1.6	1.2	1.9	2.1	1.6	0.8	1.9	1.0	1.0
6.04	Carers known to adult social care (per 1,000 population) Dec 2014 to Nov 2015 (M)	17	18	21	12	17	19	17	23	21	18	10	18	12	12
6.05	Carers (known to adult social care) receiving a service (%), Dec 2014 to Nov 2015 (M)	84	85	85	83	85	84	87	86	84	86	80	86	84	81
6.06	Carers receiving self-directed support (per 1,000 aged 18+), Dec 2014 to Nov 2015 (M)	8	8	10	6	8	9	8	10	11	9	5	9	5	6



Adult social care																
Ref	Indicator	East Sussex	EHS CCG	H&R CCG	HWLH CCG	Hailsham & Polegate			Hastings & St Leonards			Rural Rother	Crowbr.	Havens	Lewes	Uckfield
						Eastbn.	Polegate	Seaford	Bexhill	Leonards						
6.10	Requests for adult social care support (per 1,000 aged 18+), Dec 2014 to Nov 2015 (M)	25	27	29	19	26	28	29	35	27	25	16	26	19	18	
6.11	Adults receiving direct payments (per 1,000), at 30 Jun 2016 (M)	4	3	5	3	3	4	2	5	5	4	2	4	3	3	
6.12	Adults receiving self-directed support (per 1,000), at 30 Jun 2016 (M)	11	12	13	7	12	12	10	14	14	9	5	10	8	6	
6.13	Working age people receiving Long Term Support (per 1,000), Jul 2015 to Jun 2016 (M)	8	8	11	4	8	7	6	12	12	6	3	6	5	4	
6.14	People aged 65+ receiving Long Term Support (per 1,000), Jul 2015 to Jun 2016 (M)	30	34	32	24	34	36	31	29	37	27	18	35	24	22	
6.15	Learning disabled adults aged 18-64 in settled accommodation (%), Jul 2015 to Jun 2016 (M)	72	77	68	71	75	80	82	78	71	44	58	88	77	67	
6.16	Adults receiving community equipment (per 1,000), 2015/16 (M)	10	11	11	8	11	11	11	14	11	10	6	12	9	7	
6.17	Adults receiving adult social care funded lifeline or telecare (per 1,000), 2015/16 (M)	12	14	13	8	14	15	14	15	12	11	6	13	8	7	
6.18	People 65+ discharged from hosp to intermed care (per 1,000), Sep 2014 to Aug 2015 (M)	7	8	6	8	9	8	8	7	5	5	6	12	9	7	
6.19	Adults in council supported residential or nursing care (per 100,000), at 30 June 2016 (M)	579	559	748	365	564	585	497	911	771	466	608	261	224	411	
6.20	New ASC clients receiving services, not asking for more ongoing (%), Dec 14 to Nov 15 (M)	90	86	94	92	87	83	88	95	94	92	92	83	100	91	

NHS dental services																
Ref	Indicator	East Sussex	EHS CCG	H&R CCG	HWLH CCG	Hailsham & Polegate			Hastings & St Leonards			Rural Rother	Crowbr.	Havens	Lewes	Uckfield
						Eastbn.	Polegate	Seaford	Bexhill	Leonards						
3.40	Residents aged 0-17 accessing East Sussex NHS general dental services (%), 2015/16 (M)	76	78	75	76	76	79	83	74	75	77	61	76	83	87	
3.41	Residents aged 18-64 accessing East Sussex NHS general dental services (%), 2015/16 (M)	53	52	58	48	51	57	52	59	61	52	36	51	52	55	
3.42	Residents aged 65+ accessing East Sussex NHS general dental services (%), 2015/16 (M)	53	51	60	47	48	58	51	61	62	55	39	50	49	54	

GP patient survey																
Ref	Indicator	East Sussex	EHS CCG	H&R CCG	HWLH CCG	Hailsham & Polegate			Hastings & St Leonards			Rural Rother	Crowbr.	Havens	Lewes	Uckfield
						Eastbn.	Polegate	Seaford	Bexhill	Leonards						
5.01	Patients responding to the GP Patient Survey (%), 2015/16	48	49	45	52	46	53	53	54	40	57	55	46	52	53	
5.02	Patients whose experience of their GP surgery was good (%), 2015/16	88	89	87	88	90	86	92	90	84	93	92	87	89	84	
5.03	Patients whose experience of making appointments was good (%), 2015/16	78	79	80	74	81	73	77	81	78	84	76	77	72	72	
5.04	Patients satisfied with GP surgery's opening hours (%), 2015/16	78	79	79	74	81	73	77	81	77	84	76	77	72	72	
5.05	Patients who said the GP was good at involving them in decisions on care (%), 2015/16	77	79	74	78	79	76	86	78	71	79	80	77	77	78	
5.06	Patients who said the nurse was good at involving them in decisions on care (%), 2015/16	65	65	67	63	65	68	62	62	70	68	62	65	59	67	

## Appendix 2: Acronyms and abbreviations

A&E	Accident and Emergency
ACS	Ambulatory Care Sensitive
AF	Atrial Fibrillation
ASC	Adult Social Care
BP	Blood Pressure
CAMHS	Child and Adolescent Mental Health Services
CCG	Clinical Commissioning Group
CHD	Coronary Heart Disease
CKD	Chronic Kidney Disease
COPD	Chronic Obstructive Pulmonary Disease
CV	Cardiovascular
CVD	Cardiovascular Disease
DM	Diabetes Mellitus (used for diabetes QOF clinical domain)
DNA	Did Not Attend
DSR	Directly Standardised Rate
DTaP/IPV/Hib	Diphtheria, tetanus, pertussis (whooping cough), polio and Haemophilus influenzae type b (also known as the 5 in 1 vaccine)
EHCP	Education, Health and Care Plan
EHS	Eastbourne, Hailsham and Seaford
ESA	Employment and Support Allowance
EYFS	Early Years Foundation Stage
Hib	Haemophilus influenzae type b
HIV	Human Immunodeficiency Virus
HR	Hastings and Rother
HWLH	High Weald Lewes Havens
ID	Income Deprivation
ID 2015	Indices of Deprivation, 2015
IDACI	Income Deprivation Affecting Children Index
IDAOPi	Income Deprivation Affecting Older People Index
IMD	Index of Multiple Deprivation
JSA	Job Seekers Allowance
LD	Learning Disability
LRTI	Lower Respiratory Tract Infection
LSOA	Lower Super Output Area
MenC	Meningococcal C conjugate
MH	Mental Health
MIU	Minor Injury Unit
MMR	Measles, mumps and rubella
MRC	Medical Research Council
NEET	Not in Education, Employment or Training
PAD	Peripheral Arterial Disease
PCV	Pneumococcal conjugate vaccine
PHOF	Public Health Outcomes Framework

PPV	Pneumococcal polysaccharide vaccine
QOF	Quality and Outcomes Framework
RAG	Red Amber Green
RCP	Royal College of Physicians
SAR	Standardised Attendance Ratio/ Standardised Admissions Ratio
SEN	Special Educational Needs
SMR	Standardised Mortality Ratio
STIs	Sexually Transmitted Infections
UC	Universal Credit